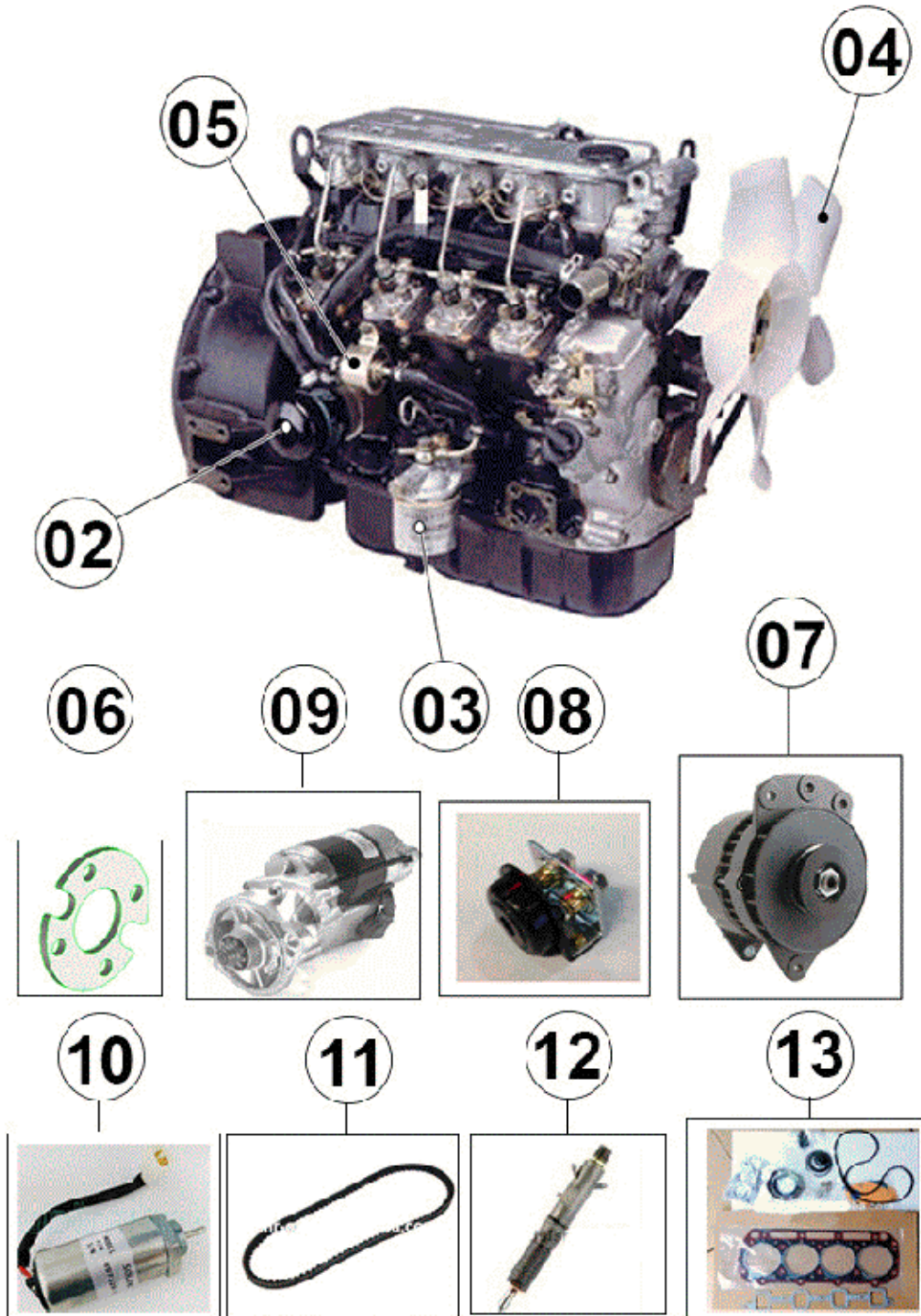


# **PARTS MANUAL**

**02. ENGINE**  
MOTOR

**01** DIESEL ENGINE **ISUZU** 3LB1

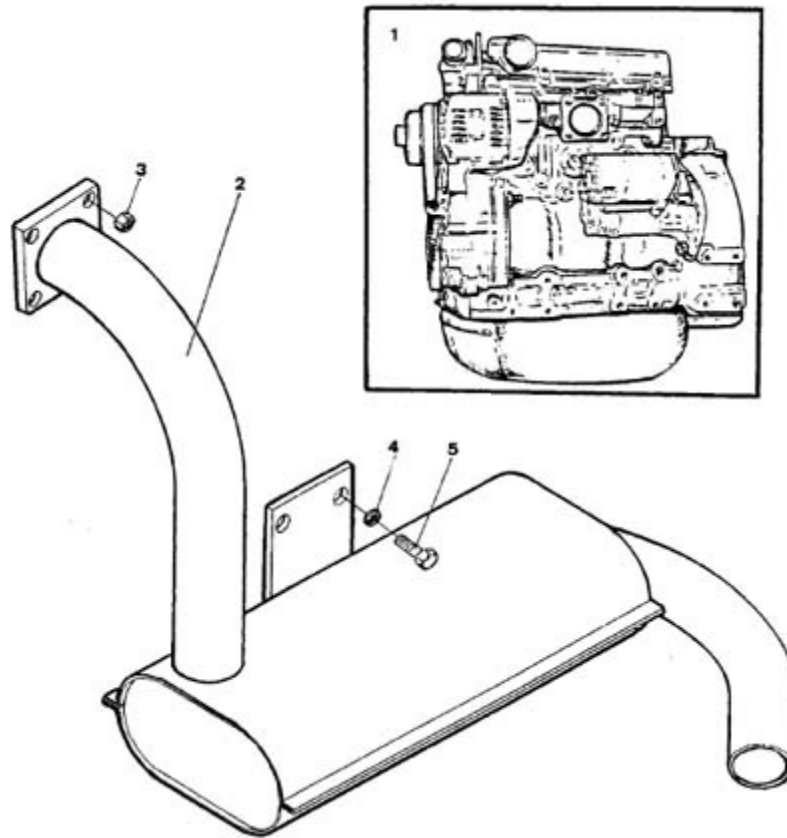


| FIGURE | REFERENCE | DENOMINATION | AMOUNT |
|--------|-----------|--------------|--------|
|--------|-----------|--------------|--------|

|     |             |                                |   |
|-----|-------------|--------------------------------|---|
| 001 | 05.60410.01 | DIESEL ENGINE                  | 1 |
| 002 | 86.70000.04 | OIL FILTER                     | 1 |
| 003 | MN000029    | FUEL FILTER GASOIL             | 1 |
| 004 | 45.89709.00 | FAN                            | 1 |
| 005 | 86.70000.07 | ELECTRIC FUEL PUMP (CH 200)    | 1 |
| 006 | 43.34001.00 | 3LD1 SPACER FAN                | 1 |
| 007 | 86.70000.01 | GENERATOR                      | 1 |
| 008 | 43.20070.00 | RESISTANCE PRECH 3LB1,3LD1,4LE | 1 |
| 009 | 86.70000.02 | STARTER ENGINE                 | 1 |
| 010 | 86.70000.06 | STOP SOLENOID                  | 1 |
| 011 | 86.70000.16 | BELT DIN2215                   | 1 |
| 012 | 86.11000.16 | INJECTOR                       | 1 |
| 013 | 86.70000.28 | GASKET KIT ENGINE 3LB1         | 1 |

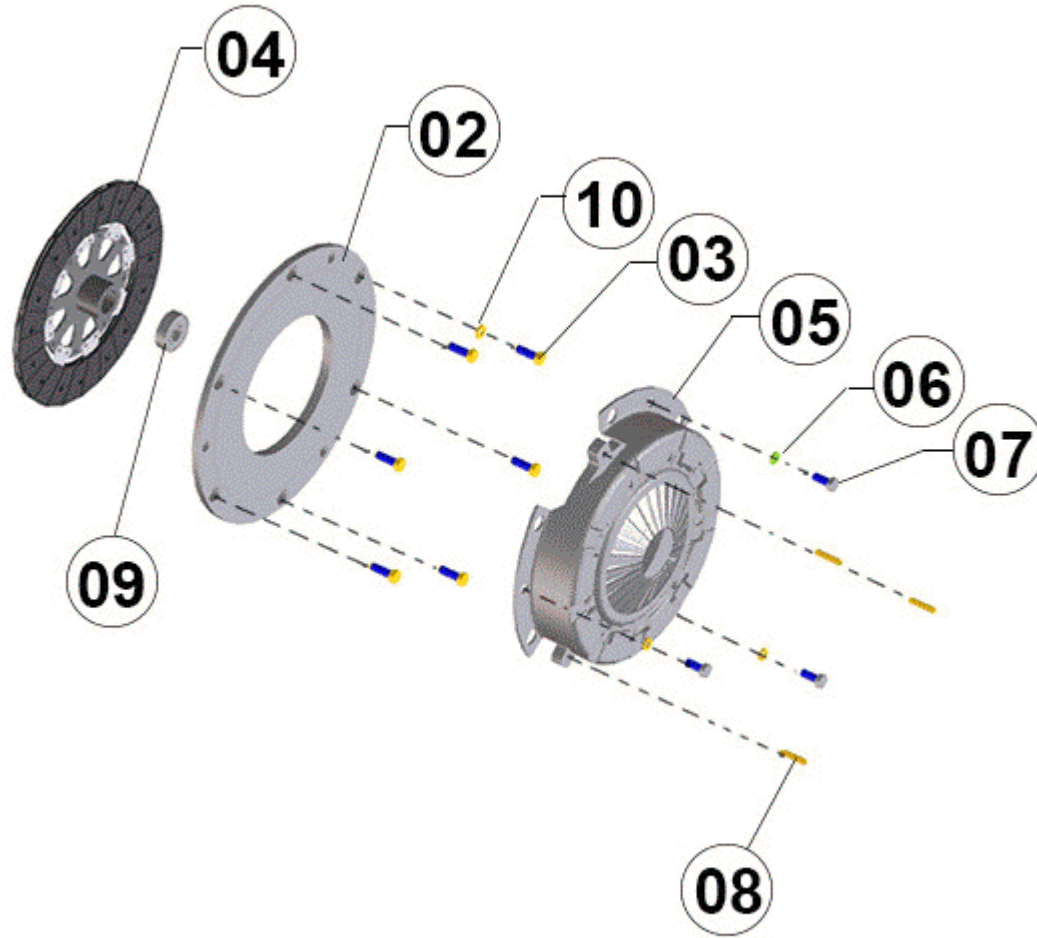
## 02. ENGINE

### ENGINE AND MUFFLER



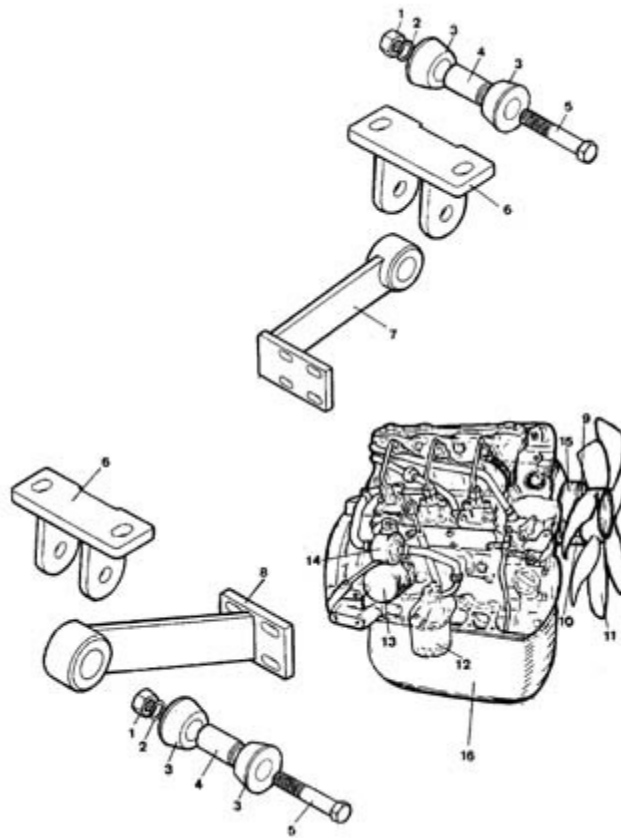
| FIGURE | REFERENCE    | DENOMINATION       | AMOUNT |
|--------|--------------|--------------------|--------|
| 001    | 05.60410.01  | DIESEL ENGINE      | 1      |
| 002    | 45.02123.00  | MUFFLER            | 1      |
| 003    | 701.10000.66 | NUT DIN934 M10x1.5 | 4      |
| 004    | 104.10000.00 | WASHER DIN7980 D10 | 2      |
| 005    | 603.10015.86 | SCREW DIN933       | 4      |

## 02. ENGINE CLUTCH



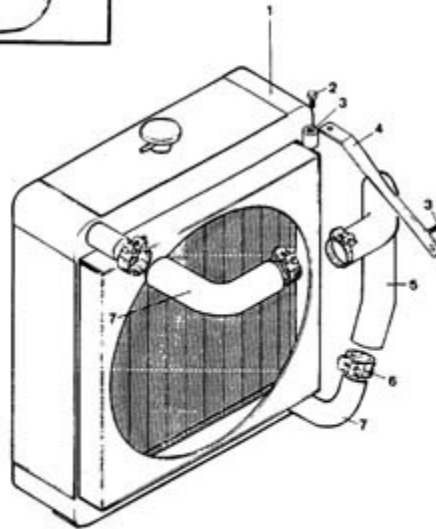
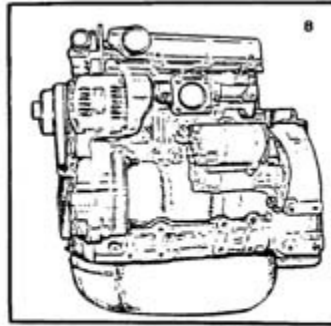
| FIGURE | REFERENCE    | DENOMINATION       | AMOUNT |
|--------|--------------|--------------------|--------|
| 002    | 43.10061.04  | PANEL              | 1      |
| 003    | 603.08025.86 | SCREW DIN933 M8x25 | 6      |
| 004    | 43.10201.03  | DISK CLUTCH        | 1      |
| 005    | 43.10202.01  | PRESSURE PLATE     | 1      |
| 006    | 104.08000.00 | WASHER DIN7980 D8  | 3      |
| 007    | 603.08020.86 | SCREW DIN933 M8x20 | 3      |
| 008    | 402.06015.00 | PIN                | 3      |
| 009    | 309.17012.00 | BEARING DIN625     | 1      |
| 010    | 115.08000.00 | WASHER DIN137      | 6      |

## 02. ENGINE ENGINE SUPPORTS



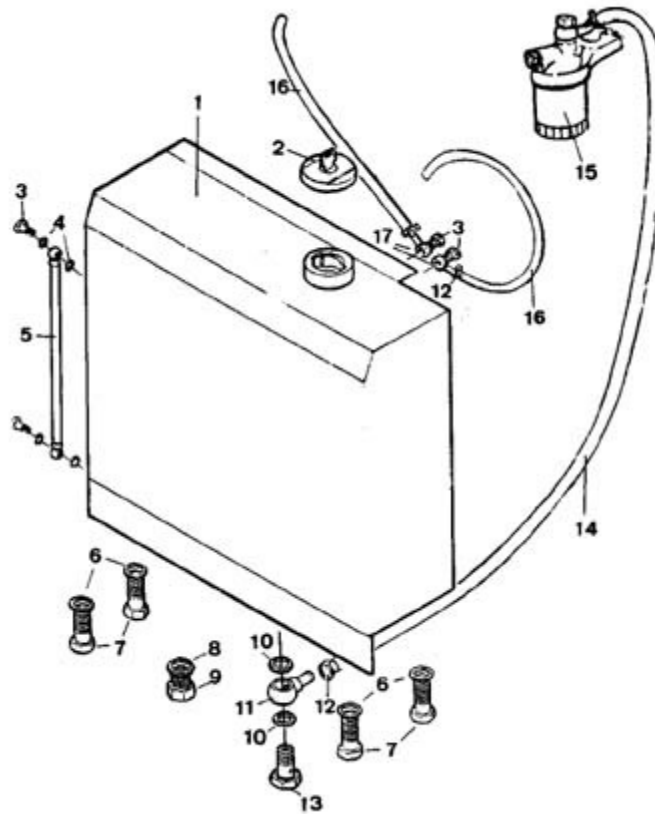
| FIGURE | REFERENCE    | DENOMINATION                 | AMOUNT |
|--------|--------------|------------------------------|--------|
| 001    | 701.14000.66 | NUT DIN934 M14x2             | 2      |
| 002    | 104.14000.00 | CIR-CLIP EXT. DIN7980        | 2      |
| 003    | 15.00113.00  | SHOCK DAMPER 22X47X22.5 GOMA | 2      |
| 004    | 15.00114.00  | BUSH                         | 4      |
| 005    | 604.14080.86 | SCREW DIN931                 | 2      |
| 006    | 16.00138.00  | ENGINE SUPPORT               | 2      |
| 007    | 45.02117.00  | ENGINE SUPPORT               | 1      |
| 008    | 45.02118.00  | ENGINE SUPPORT               | 1      |
| 009    | 603.08075.86 | SCREW DIN933                 | 4      |
| 010    | IZ8970634001 | SPACER                       | 1      |
| 011    | 45.89709.00  | FAN                          | 1      |
| 012    | MN000029     | FUEL FILTER GASOIL           | 1      |
| 013    | 86.70000.04  | OIL FILTER                   | 1      |
| 014    | 86.70000.07  | ELECTRIC FUEL PUMP (CH 200)  | 1      |
| 015    | 45.02055.00  | FAN SUPPORT                  | 1      |
| 016    | 05.60410.01  | DIESEL ENGINE                | 1      |

## 02. ENGINE RADIATOR



| FIGURE | REFERENCE    | DENOMINATION             | AMOUNT |
|--------|--------------|--------------------------|--------|
| 001    | 59.60410.00  | RADIATOR                 | 1      |
| 002    | 603.06010.86 | SCREW DIN933 M6x10       | 2      |
| 003    | 85.11300.65  | SHOCK ABSORVER           | 4      |
| 004    | 10.02155.00  | TIE ROD                  | 4      |
| 005    | 43.13150.00  | 3LD1 HOSE RADIATOR UPPER | 4      |
| 006    | 935.25040.66 | CLAMP                    | 4      |
| 007    | 43.13160.00  | 3LD1 HOSE RADIATOR UPPER | 1      |
| 008    | 05.60410.01  | DIESEL ENGINE            | 1      |

## 02. ENGINE GAS-OIL TANK



| FIGURE | REFERENCE    | DENOMINATION                 | AMOUNT |
|--------|--------------|------------------------------|--------|
| 001    | 45.01461.02  | TANK                         | 1      |
| 002    | 15.01524.01  | CAP WITH LOCK 40X72          | 1      |
| 003    | 80.06041.00  | FITTING SCREW SIM. M8x1x16   | 4      |
| 004    | 106.08000.20 | WASHER CU                    | 8      |
| 005    | 54.14400.01  | HOSE TRANS. PLAS             | 1      |
| 006    | 104.10000.00 | WASHER DIN7980 D10           | 4      |
| 007    | 603.10025.86 | SCREW DIN933 M10x25          | 4      |
| 008    | 107.14000.10 | WASHER AL 14x20x1.5          | 1      |
| 009    | 00.02803.00  | SCREW DIN910*                | 1      |
| 010    | 106.14000.20 | WASHER CU                    | 2      |
| 011    | 45.04106.00  | NIPPLE O/TB                  | 1      |
| 012    | 912.12000.66 | CLAMP                        | 4      |
| 013    | 52.00110.00  | NIPPLE SCREW SIM.            | 1      |
| 014    | 45.04108.01  | TUBO GOMA B/P 8x14x340 COMP. | 1      |
| 015    | MN000029     | FUEL FILTER GASOIL           | 1      |
| 016    | 43.14105.09  | TUBO GOMA B/P 4x9x400        | 2      |





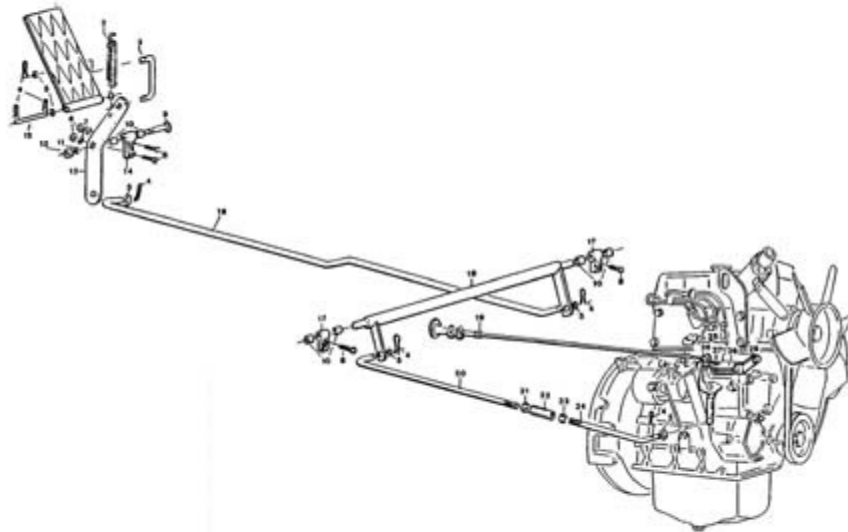
017

45.04107.00

FITTING O/TB D3-D8.2

2

## 02. ENGINE ACCELERATOR



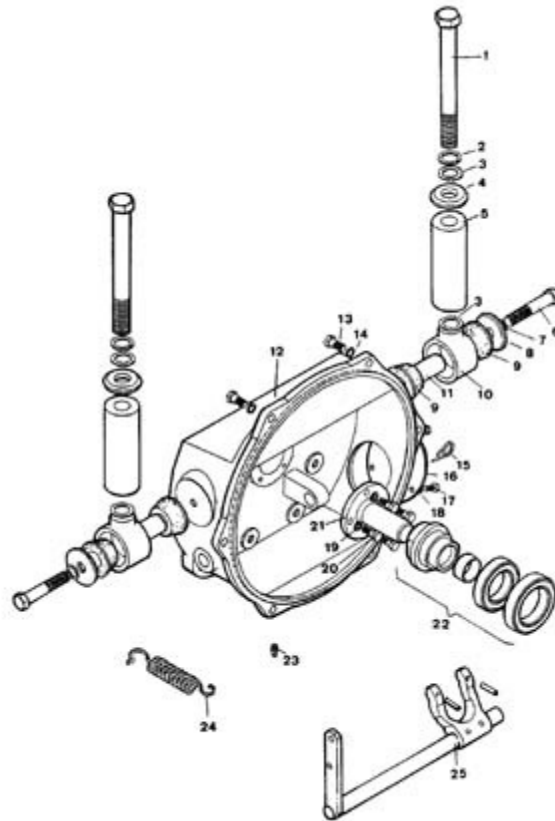
| FIGURE | REFERENCE    | DENOMINATION                | AMOUNT |
|--------|--------------|-----------------------------|--------|
| 001    | 45.00127.00  | ACCEL. PEDAL                | 1      |
| 002    | 01.00139.00  | SPRING TENSION              | 1      |
| 003    | 45.00128.00  | ROD U6                      | 1      |
| 004    | 401.02025.60 | PIN DIN94 2x25              | 8      |
| 005    | 101.06000.66 | WASHER DIN125 D6            | 8      |
| 006    | 701.06000.86 | NUT                         | 2      |
| 007    | 104.06000.00 | WASHER DIN7980 D6           | 2      |
| 008    | 603.06030.86 | SCREW DIN933 M6x30          | 4      |
| 009    | 00.01366.01  | AXLE 16X7X47 THROTTLE PEDAL | 1      |
| 010    | 01.00145.00  | BEARING                     | 6      |
| 011    | 104.08000.00 | WASHER DIN7980 D8           | 1      |
| 012    | 701.07000.86 | NUT                         | 1      |
| 013    | 45.00129.00  | LEVER                       | 1      |
| 014    | 01.00126.02  | AXLE SUPPORT 20X29X60       | 1      |
| 015    | 45.00124.00  | SHAFT CIL/CIL               | 1      |
| 016    | 45.04112.00  | VARILLA FOR.7 677 @-@       | 1      |

|     |             |                     |   |
|-----|-------------|---------------------|---|
| 017 | 15.00124.03 | BEARING             | 2 |
| 018 | 45.04119.00 | EJE CIL/CIL 9x9x510 | 1 |

**02. ENGINE  
ACCELERATOR**

| <b>FIGURE</b> | <b>REFERENCE</b> | <b>DENOMINATION</b> | <b>AMOUNT</b> |
|---------------|------------------|---------------------|---------------|
| 019           | 16.00148.00      | CABLE ACC.          | 1             |
| 020           | 53.00152.02      | ROD                 | 1             |
| 021           | 01.00138.00      | NUT                 | 1             |
| 022           | 01.00133.00      | TENSIONER           | 1             |
| 023           | 701.06000.86     | NUT                 | 1             |
| 024           | 45.00130.00      | ROD L6              | 1             |
| 025           | 45.03150.00      | LATCH               | 1             |
| 026           | 84.56000.31      | CIERRE CABLE MANDO  | 1             |
| 027           | 84.50002.19      | SCREW               | 1             |
| 028           | 45.00139.00      | SPRING TENSION      | 1             |
| 029           | 45.04113.00      | SPRING SUPPORT      | 1             |

# TRANSMISSION CLUTCH BELL HOUSING



| FIGURE | REFERENCE    | DENOMINATION                 | AMOUNT |
|--------|--------------|------------------------------|--------|
| 001    | 604.14140.96 | SCREW                        | 2      |
| 002    | 104.14000.00 | CIR-CLIP EXT. DIN7980        | 2      |
| 003    | 101.14000.66 | WASHER DIN125 D14            | 4      |
| 004    | 01.00227.02  | WASHER DIN125                | 2      |
| 005    | 45.03014.00  | CASQUILLO. 14x45x104.5 DER.  | 2      |
| 006    | 604.14075.86 | SCREW DIN931                 | 2      |
| 007    | 104.14000.00 | CIR-CLIP EXT. DIN7980        | 2      |
| 008    | 37.00374.00  | WASHER DIN9021 14,5x50x5     | 2      |
| 009    | 15.00113.00  | SHOCK DAMPER 22X47X22.5 GOMA | 4      |
| 010    | 01.00107.00  | SHOCK ABSORVER SUPPORT       | 2      |
| 011    | 15.00114.00  | BUSH                         | 2      |
| 012    | 45.04211.01  | CLUTCH CASING                | 1      |
| 013    | 603.10030.86 | SCREW DIN933                 | 8      |
| 014    | 104.10000.00 | WASHER DIN7980 D10           | 8      |
| 015    | 01.00220.01  | SPRING TORSION               | 1      |
| 016    | 01.00225.10  | COVER HANDHOLE               | 1      |

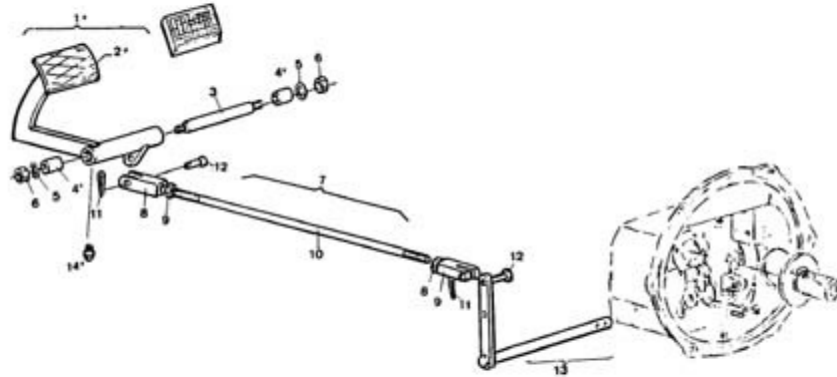
|     |              |                    |   |
|-----|--------------|--------------------|---|
| 017 | 603.06015.86 | SCREW DIN933 M6x15 | 6 |
| 018 | 104.06000.00 | WASHER DIN7980 D6  | 6 |

**TRANSMISSION  
CLUTCH BELL HOUSING**

| <b>FIGURE</b> | <b>REFERENCE</b> | <b>DENOMINATION</b>        | <b>AMOUNT</b> |
|---------------|------------------|----------------------------|---------------|
| 019           | 104.08000.00     | WASHER DIN7980 D8          | 4             |
| 020           | 603.08020.86     | SCREW DIN933 M8x20         | 4             |
| 021           | 01.00235.00      | BEARING SUPPORT            | 1             |
| 022           | 45.04204RE02     | THROWOUT BEARING           | 1             |
| 023           | 901.08000.33     | GREASER DIN71412-A M8x1,25 | 1             |
| 024           | 01.00223.02      | SPRING TENSION             | 1             |
| 025           | 45.00020.02      | ACC. FORK                  | 1             |

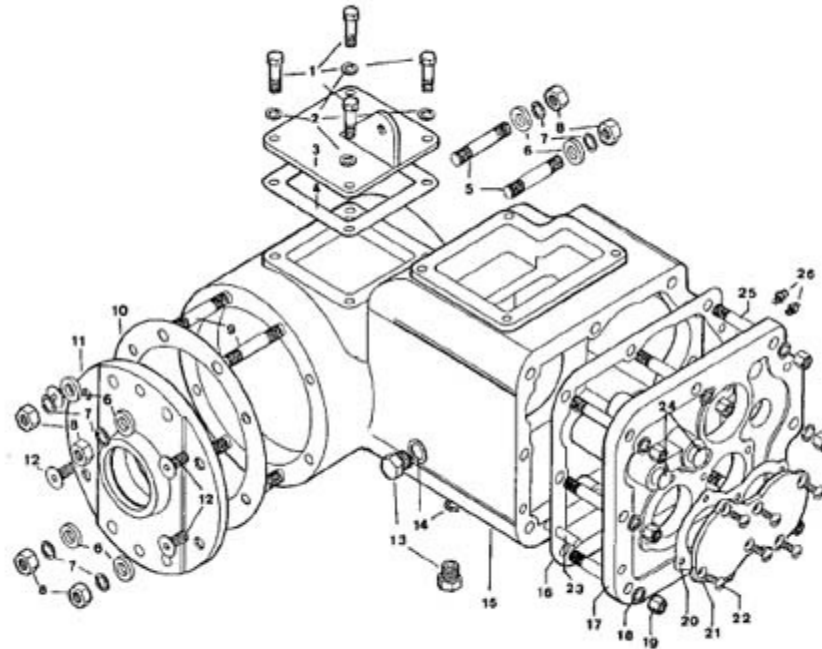
# TRANSMISSION

## CLUTCH PEDAL



| FIGURE | REFERENCE    | DENOMINATION                   | AMOUNT |
|--------|--------------|--------------------------------|--------|
| 001    | 45.00716.01  | CLUTCH PEDAL                   | 1      |
| 002    | 45.00250.01  | CLUTCH PEDAL                   | 1      |
| 003    | 45.00215.00  | EJE ROS/ROS 12x12x195          | 1      |
| 004    | 923.18030.00 | BEARING                        | 2      |
| 005    | 45.00210.00  | ARANDELA DIN125* 12,5x31x5 CON | 2      |
| 006    | 722.11000.80 | NUT                            | 2      |
| 007    | 45.00704.00  | VARILLA. EMBR.                 | 1      |
| 008    | 15.00719.10  | ART. FORK                      | 2      |
| 009    | 701.12000.86 | NUT                            | 2      |
| 010    | 45.00212.00  | VARILLA REC.12 530 M-M         | 1      |
| 011    | 401.02025.60 | PIN DIN94 2x25                 | 2      |
| 012    | 01.00514.01  | AXLE CIL/CPA 14x8x28           | 2      |
| 013    | 45.00020.02  | ACC. FORK                      | 1      |
| 014    | 901.08000.33 | GREASER DIN71412-A M8x1,25     | 1      |

# TRANSMISSION GEARBOX (EXTERNAL)



| FIGURE | REFERENCE    | DENOMINATION               | AMOUNT |
|--------|--------------|----------------------------|--------|
| 0      | 45.00007.01  | CONJ. CAJA C/V ISUZU COMP. | 1      |
| 001    | 603.08025.86 | SCREW DIN933 M8x25         | 4      |
| 002    | 104.08000.00 | WASHER DIN7980 D8          | 4      |
| 003    | 01.00384.00  | COVER HANDHOLE             | 1      |
| 004    | 01.00385.00  | PAPER GASKET               | 1      |
| 005    | 01.00383.01  | STUD DIN939*               | 4      |
| 006    | 01.00345.00  | WASHER DIN1441*            | 8      |
| 007    | 104.12000.00 | WASHER DIN7980 D12         | 8      |
| 008    | 00.00130.00  | NUT                        | 8      |
| 009    | 01.00383.00  | STUD DIN939*               | 4      |
| 010    | 01.00382.00  | PAPER GASKET               | 1      |
| 011    | 01.00378.01  | FLANGE                     | 1      |
| 012    | 618.08020.86 | SCREW DIN7991 M8x20        | 4      |
| 013    | 00.02803.00  | SCREW DIN910*              | 2      |
| 014    | 107.14000.10 | WASHER AL 14x20x1.5        | 2      |
| 015    | 01.00351.04  | CASING                     | 1      |

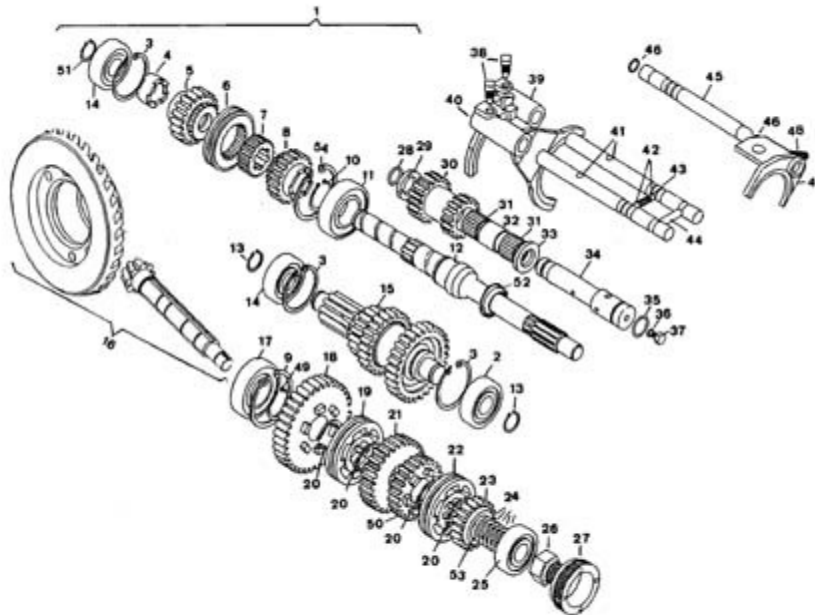
|     |             |              |   |
|-----|-------------|--------------|---|
| 016 | 01.00368.01 | PAPER GASKET | 1 |
| 017 | 01.00350.02 | FLANGE       | 1 |

**TRANSMISSION  
GEARBOX (EXTERNAL)**

| <b>FIGURE</b> | <b>REFERENCE</b> | <b>DENOMINATION</b> | <b>AMOUNT</b> |
|---------------|------------------|---------------------|---------------|
| 018           | 104.10000.00     | WASHER DIN7980 D10  | 8             |
| 019           | 701.10000.66     | NUT DIN934 M10x1.5  | 8             |
| 020           | 01.00367.01      | PAPER GAKET         | 1             |
| 021           | 01.00364.01      | COVER HANDHOLE      | 1             |
| 022           | 624.06018.66     | SCREW               | 6             |
| 023           | 01.00349.00      | PIN                 | 1             |
| 024           | 01.00327.00      | CAP                 | 2             |
| 025           | 01.00371.01      | STUD DIN939*        | 8             |
| 026           | 01.00365.00      | SCREW DIN564*       | 2             |



# TRANSMISSION GEARBOX (INTERNAL)



| FIGURE | REFERENCE    | DENOMINATION               | AMOUNT |
|--------|--------------|----------------------------|--------|
| 001    | 45.00007.01  | CONJ. CAJA C/V ISUZU COMP. | 1      |
| 002    | 301.20015.00 | BEARING DIN625             | 1      |
| 003    | 905.52000.00 | RING 0,5 MM.               | 3      |
| 004    | 45.00356.00  | BUSH                       | 1      |
| 005    | 45.00365.00  | GEAR z19                   | 1      |
| 006    | 45.00354.00  | COUPLING CYL/CYL           | 1      |
| 007    | 45.00374.00  | COUPLING CYL/CYL           | 1      |
| 008    | 45.00358.00  | GEAR z18                   | 1      |
| 009    | 905.62000.00 | RING 0,5 MM.               | 1      |
| 010    | 904.30000.00 | RING 0,5 MM.               | 1      |
| 011    | 301.30016.00 | BEARING DIN625             | 1      |
| 012    | 45.00353.01  | SHAFT CAS/CIL              | 1      |
| 013    | 904.20000.00 | RING 0,5 MM.               | 2      |
| 014    | 306.20015.00 | BEARING DIN5412            | 2      |
| 015    | 45.00352RE00 | SHAFT CAS/CAS              | 1      |
| 016    | 01.30000.01  | CONICAL GEAR SET           | 1      |

|     |              |                 |   |
|-----|--------------|-----------------|---|
| 017 | 320.30016.00 | BEARING DIN5412 | 1 |
| 018 | 45.00371.01  | GEAR            | 1 |

**TRANSMISSION  
GEARBOX (INTERNAL)**

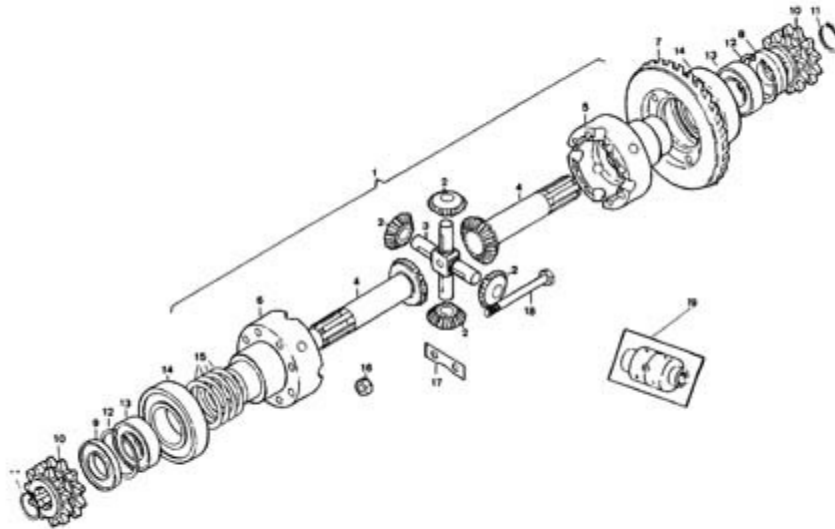
| FIGURE | REFERENCE    | DENOMINATION       | AMOUNT |
|--------|--------------|--------------------|--------|
| 019    | 45.00373.00  | COUPLING CYL/CYL   | 1      |
| 019    | 45.00373.10  | COUPLING CYL/CYL   | 1      |
| 020    | 937.28002.00 | RING 0,5 MM.       | 4      |
| 021    | 45.00370.00  | GEAR z28           | 1      |
| 022    | 45.00385.00  | COUPLING CYL/CYL   | 1      |
| 022    | 45.00385.10  | COUPLING CYL/CYL   | 1      |
| 023    | 45.00372.00  | GEAR z18           | 1      |
| 024    | 01.03912.00  | WASHER ADJUST.     | 1      |
| 024    | 01.03913.00  | WASHER ADJUST.     | 1      |
| 024    | 01.03914.00  | WASHER ADJUST.     | 1      |
| 025    | 328.20015.00 | BEARING DIN618     | 1      |
| 026    | 01.00394.02  | NUT                | 1      |
| 027    | 01.00393.01  | NUT                | 1      |
| 028    | 201.15025.50 | O-RING DIN3770     | 1      |
| 029    | 45.00363.00  | BUSH               | 1      |
| 030    | 45.00362.00  | GEAR z17-15        | 1      |
| 031    | 308.20020.00 | NEEDLES            | 2      |
| 032    | 45.00364.00  | BUSH               | 1      |
| 033    | 45.00380.00  | WASHER DIN126*     | 1      |
| 034    | 45.00355.00  | SHAFT CAS/CAS      | 1      |
| 035    | 201.19002.50 | O-RING DIN3770     | 1      |
| 036    | 101.06000.66 | WASHER DIN125 D6   | 2      |
| 037    | 624.06015.66 | SCREW DIN63        | 1      |
| 038    | 01.00319.00  | SCREW DIN480       | 2      |
| 039    | 45.00315.00  | ACC. FORK          | 1      |
| 040    | 45.00316.00  | ACC. FORK          | 1      |
| 041    | 45.00314.00  | SHAFT CIL/CIL      | 2      |
| 042    | 908.08000.00 | BALL               | 3      |
| 043    | 00.03128.01  | SPRING COMPRESSION | 1      |
| 044    | 01.00320.00  | PIN                | 1      |
| 045    | 45.00313.00  | SHAFT CAS/CAS      | 1      |
| 046    | 201.11275.50 | O-RING DIN3770     | 2      |

|     |             |                    |   |
|-----|-------------|--------------------|---|
| 047 | 45.00317.00 | ACC. FORK          | 1 |
| 048 | 15.00315.00 | SPRING COMPRESSION | 1 |
| 049 | 45.00386.01 | BUSH               | 1 |
| 049 | 45.00386.02 | BUSH               | 1 |

## **TRANSMISSION GEARBOX (INTERNAL)**

| <b>FIGURE</b> | <b>REFERENCE</b> | <b>DENOMINATION</b> | <b>AMOUNT</b> |
|---------------|------------------|---------------------|---------------|
| 050           | 45.00369.00      | GEAR z23            | 1             |
| 051           | 937.20175.00     | RING 0,5 MM.        | 1             |
| 052           | 202.34075.50     | SEAL DIN3760        | 1             |
| 053           | 01.00386.00      | WASHER DIN443*      | 1             |
| 054           | 905.62000.00     | RING 0,5 MM.        | 1             |

# TRANSMISSION DIFFERENTIAL



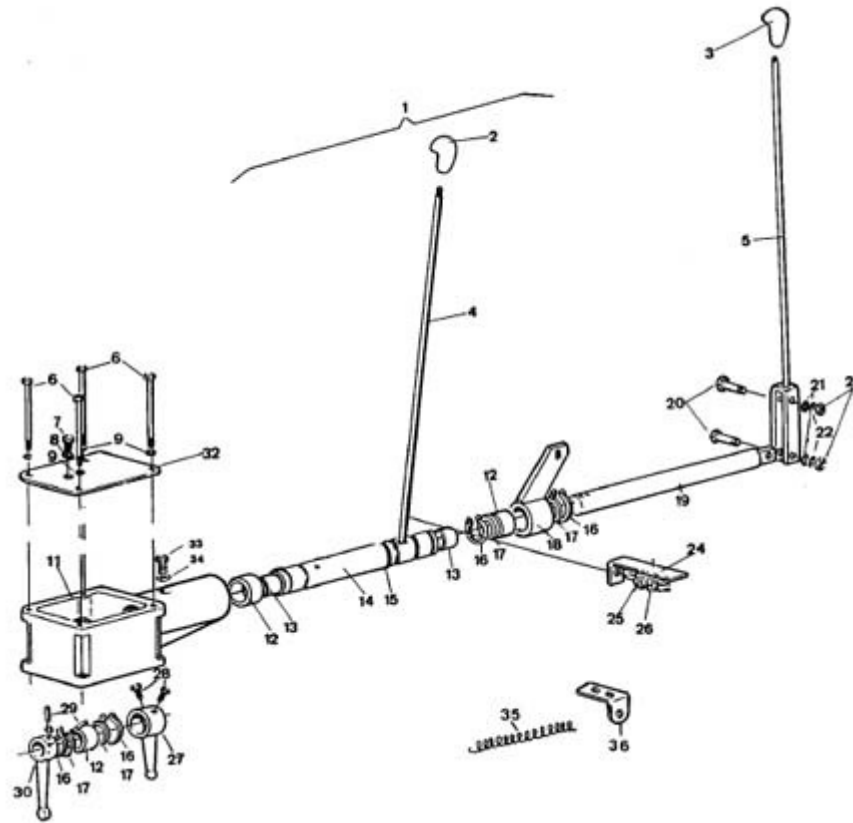
| FIGURE | REFERENCE    | DENOMINATION               | AMOUNT |
|--------|--------------|----------------------------|--------|
| 001    | 01.00302RE02 | DIFFERENTIAL WITHOUT CROWN | 1      |
| 001    | 01.03000.02  | DIFERENCIAL C/CORONA COMP. | 1      |
| 002    | 01.00387.00  | GEAR z12                   | 4      |
| 003    | 01.00388.00  | AXLES                      | 1      |
| 004    | 00.00382.02  | GEAR CONICAL               | 2      |
| 005    | 01.00376.02  | CASING                     | 1      |
| 006    | 01.00375.02  | CASING                     | 1      |
| 007    | 01.30000.02  | CONICAL GEAR SET           | 1      |
| 007    | 01.30000.01  | CONICAL GEAR SET           | 1      |
| 008    | 202.25008.50 | SEAL DIN3760               | 1      |
| 009    | 202.25007.50 | SEAL DIN3760               | 1      |
| 010    | 02.00385.02  | GEAR z11-11                | 2      |
| 011    | 904.25000.00 | RING 0,5 MM.               | 2      |
| 012    | 905.52000.00 | RING 0,5 MM.               | 2      |
| 013    | 301.25015.01 | BEARING DIN625             | 2      |
| 014    | 301.40018.00 | BEARING DIN625             | 2      |

|     |             |       |   |
|-----|-------------|-------|---|
| 015 | 01.00389.00 | PANEL | 1 |
| 016 | 01.01302.00 | NUT   | 8 |

**TRANSMISSION  
DIFFERENTIAL**

| <b>FIGURE</b> | <b>REFERENCE</b> | <b>DENOMINATION</b>     | <b>AMOUNT</b> |
|---------------|------------------|-------------------------|---------------|
| 017           | 01.00389.00      | PANEL                   | 4             |
| 018           | 01.00380.00      | SCREW DIN931*           | 8             |
| 019           | 01.03010.02      | CAJA DIFERENCIAL AJUST. | 1             |

# TRANSMISSION SHIFT GEAR LEVERS



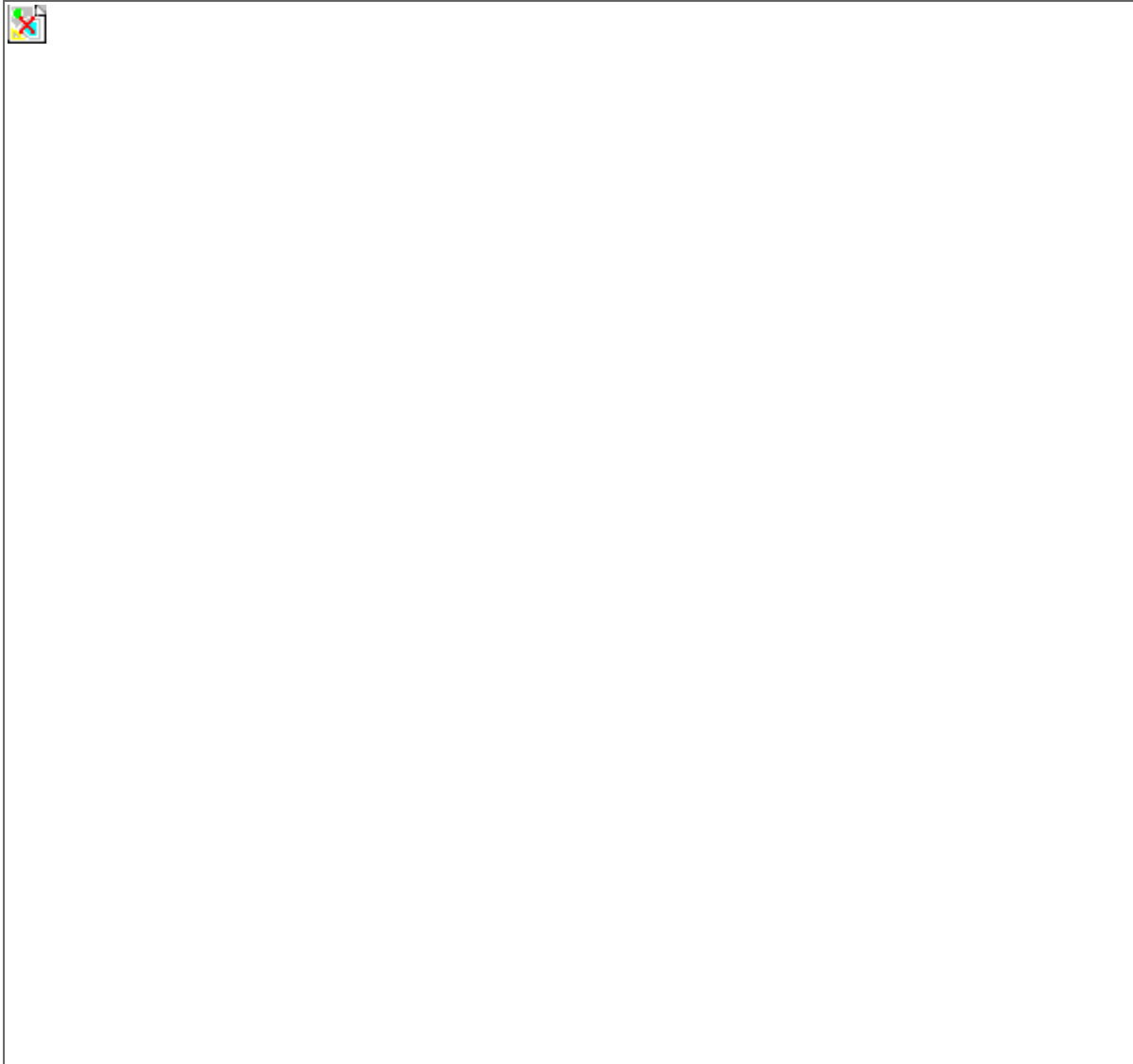
| FIGURE | REFERENCE    | DENOMINATION             | AMOUNT |
|--------|--------------|--------------------------|--------|
| 001    | 45.00307.11  | PALANCA MANDO C/V        | 1      |
| 002    | 01.00325.03  | KNOB                     | 1      |
| 003    | 01.00325.02  | EMPU \ Adur D50X79 C / V | 1      |
| 004    | 45.00341.11  | CONTROL LEVER            | 1      |
| 005    | 45.00343.10  | CONTROL LEVER            | 1      |
| 006    | 45.00308.01  | SCREW DIN931*            | 4      |
| 007    | 00.02803.00  | SCREW DIN910*            | 1      |
| 008    | 107.14000.10 | WASHER AL 14x20x1.5      | 1      |
| 009    | 104.08000.00 | WASHER DIN7980 D8        | 4      |
| 011    | 45.00310.01  | SOP. C/V                 | 1      |
| 012    | 43.00333.01  | BEARING                  | 3      |
| 013    | 923.22025.00 | BEARING                  | 2      |
| 014    | 45.00341.11  | CONTROL LEVER            | 1      |
| 015    | 201.32002.50 | O-RING DIN3770           | 1      |
| 016    | 904.35000.00 | RING 0,5 MM.             | 2      |
| 017    | 43.00330.00  | WASHER DIN126*           | 2      |

|     |             |              |   |
|-----|-------------|--------------|---|
| 018 | 45.00338.00 | SUPPORT ART. | 1 |
| 019 | 45.03230.00 | AXLE CPA/REC | 1 |

**TRANSMISSION  
SHIFT GEAR LEVERS**

| <b>FIGURE</b> | <b>REFERENCE</b> | <b>DENOMINATION</b>     | <b>AMOUNT</b> |
|---------------|------------------|-------------------------|---------------|
| 020           | 604.09040.86     | SCREW DIN931            | 3             |
| 021           | 101.09000.66     | WASHER DIN125           | 2             |
| 022           | 104.10000.00     | WASHER DIN7980 D10      | 2             |
| 023           | 701.09000.86     | NUT                     | 2             |
| 024           | 45.00328.01      | SOP. ANG.               | 1             |
| 025           | 708.14000.66     | NUT                     | 1             |
| 026           | 45.01525.00      | SWITCH                  | 1             |
| 027           | 45.00318.02      | ACC.LEVER               | 1             |
| 028           | 01.00319.00      | SCREW DIN480            | 2             |
| 029           | 402.06030.00     | PIN                     | 2             |
| 030           | 45.00311.01      | CONTACT LEVER           | 1             |
| 032           | 45.00340.00      | TAPA REGISTRO 6x120x151 | 1             |
| 033           | 52.00365.00      | CAP                     | 1             |
| 034           | 108.14000.40     | WASHER FI               | 1             |
| 035           | 46.00322.00      | SPRING TENSION          | 1             |
| 036           | 59.00927.01      | SPRING SUPPORT          | 1             |

**TRANSMISSION  
FRONT AXLE**



| FIGURE | REFERENCE    | DENOMINATION                   | AMOUNT |
|--------|--------------|--------------------------------|--------|
| 001    | 45.00017.00  | C.TROMPETA IZQ. CE-16          | 1      |
| 002    | 45.00400.00  | ASCLE HOUSING                  | 1      |
| 003    | 02.00419.00  | RING DIN471 E93x3              | 1      |
| 004    | 45.00019.00  | TAMBOR FRENO 130x306x306 COMP. | 2      |
| 005    | 45.00452.00  | SCREW FASTENING WHEEL          | 10     |
| 006    | 45.00019RE00 | BRAKE DRUMP                    | 2      |
| 007    | 45.00588.00  | NUT DIN982 M16x1,5             | 10     |
| 008    | 43.08034.00  | SCREW DIN912*                  | 16     |
| 009    | 104.08000.00 | WASHER DIN7980 D8              | 16     |
| 010    | 711.08000.66 | NUT DIN982 M8                  | 16     |
| 011    | 603.09030.86 | SCREW DIN933                   | 2      |



|     |              |                            |    |
|-----|--------------|----------------------------|----|
| 012 | 104.10000.00 | WASHER DIN7980 D10         | 16 |
| 013 | 45.00427.00  | SCREW DIN931*              | 7  |
| 014 | 01.01303.00  | NUT                        | 9  |
| 015 | 45.00432.00  | PLANCHA TRANS. 6x368x370   | 2  |
| 016 | 45.00426.00  | TAMBOR SEPARADOR D372x186  | 1  |
| 017 | 01.00016.00  | TENSOR CADENA COMP.        | 1  |
| 018 | 603.10080.86 | SCREW DIN933               | 1  |
| 019 | 00.00422.00  | TENSIONER                  | 1  |
| 020 | 01.00425.00  | NUT                        | 1  |
| 021 | 603.06015.86 | SCREW DIN933 M6x15         | 4  |
| 022 | 00.00427.00  | COVER HANDHOLE             | 2  |
| 024 | 45.00018.00  | C.TROMPETA DER. CE-16      | 1  |
| 025 | 45.00401.00  | ASCLE HOUSING              | 1  |
| 026 | 01.01312.00  | NUT                        | 2  |
| 027 | 104.14000.00 | CIR-CLIP EXT. DIN7980      | 2  |
| 028 | 401.25030.60 | PIN                        | 2  |
| 030 | 45.00420.00  | FLANGE                     | 2  |
| 032 | 604.08100.86 | SCREW DIN931 M8x100        | 6  |
| 033 | 702.08000.66 | NUT                        | 6  |
| 034 | 45.00014.00  | CONJUNTO PALIER DERECHO.   | 1  |
| 035 | 45.00414.00  | DRIVE SHAFT                | 1  |
| 036 | 202.45007.50 | SEAL DIN3760 45x55x7       | 1  |
| 037 | 02.00417.00  | NUT DIN547 M88x1,5 TROMPET | 1  |
| 038 | 301.45038.00 | BEARING DIN628             | 4  |
| 039 | 02.00415.00  | DRIVESHAFT NUT DIN547      | 2  |

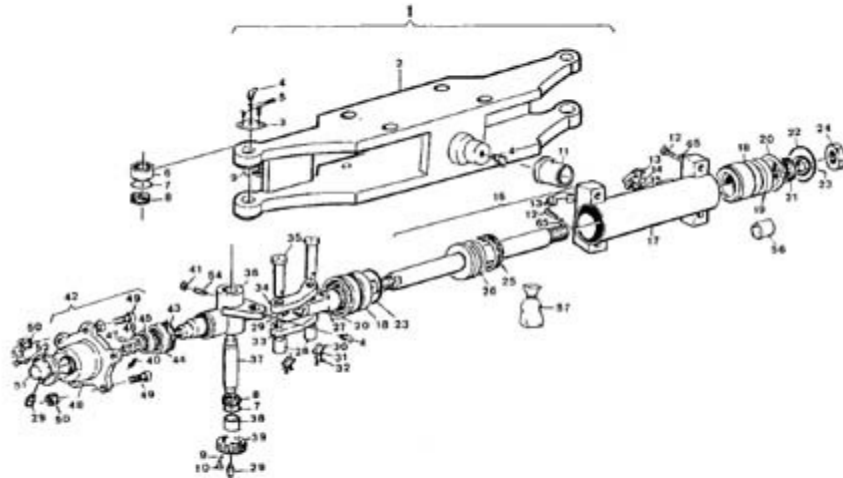
**TRANSMISSION  
FRONT AXLE**

| FIGURE | REFERENCE    | DENOMINATION         | AMOUNT |
|--------|--------------|----------------------|--------|
| 040    | 905.80000.00 | RING 0,5 MM.         | 4      |
| 041    | 306.40018.00 | BEARING DIN5412      | 2      |
| 042    | 101.30000.66 | WASHER DIN125 D30    | 2      |
| 043    | 01.01319.00  | NUT DIN935 M30x2x30  | 2      |
| 044    | 401.04050.60 | PIN DIN94 4x50       | 2      |
| 045    | 45.00015.00  | PALIER IZQ. CONJ.    | 1      |
| 046    | 45.00415.00  | DRIVE SHAFT          | 1      |
| 047    | 02.00519.01  | KEY DIN6888 10x16x45 | 2      |
| 048    | 45.00411.01  | GEAR z60-60          | 2      |

|     |             |              |   |
|-----|-------------|--------------|---|
| 049 | 45.00402.02 | CHAIN        | 2 |
| 050 | 02.00385.02 | GEAR z11-11  | 2 |
| 051 | 00.00412.00 | STUD DIN939* | 7 |

# TRANSMISSION

## REAR AXLE



| FIGURE | REFERENCE    | DENOMINATION              | AMOUNT |
|--------|--------------|---------------------------|--------|
| 001    | 45.00600.21  | Rear axle                 | 1      |
| 002    | 45.00642.01  | Rear axle                 | 1      |
| 003    | 45.00668.00  | COVER HANDHOLE            | 2      |
| 004    | 903.08000.33 | GREASER DIN71412-B        | 8      |
| 005    | 618.04010.86 | SCREW DIN933              | 6      |
| 006    | 925.30019.00 | BUSHING                   | 2      |
| 007    | 201.48004.50 | O-RING DIN3770            | 4      |
| 008    | 45.00646.00  | GUIDE                     | 4      |
| 009    | 104.08000.00 | WASHER DIN7980 D8         | 2      |
| 010    | 603.08012.86 | SCREW DIN933              | 2      |
| 011    | 45.00645.00  | BEARING                   | 2      |
| 012    | 604.16055.86 | SCREW DIN931              | 4      |
| 013    | 43.01365.01  | TUBO R1T3/8 3400 TL-TL    | 2      |
| 014    | 08.00317.00  | METALLIC GASKET BUNA D3/8 | 2      |
| 015    | 08.00319.00  | NIPPLE M/M                | 2      |
| 016    | 45.00640.11  | CYLINDER D/E              | 1      |

|     |             |                       |   |
|-----|-------------|-----------------------|---|
| 017 | 45.00661.02 | CAMISA CILINDRO       | 1 |
| 018 | 45.00662.12 | GUIA VASTAGO 30x80x72 | 2 |

## TRANSMISSION

### REAR AXLE

| FIGURE | REFERENCE    | DENOMINATION               | AMOUNT |
|--------|--------------|----------------------------|--------|
| 019    | 45.00662.10  | GASKET HOLDER              | 2      |
| 020    | 905.80000.00 | RING 0,5 MM.               | 2      |
| 021    | 224.30010.50 | GASKET DIN6505*            | 2      |
| 022    | 201.74004.50 | O-RING DIN3770             | 2      |
| 023    | 206.30007.50 | WIPER RING                 | 2      |
| 024    | 10.01117.00  | NUT DIN439                 | 2      |
| 025    | 207.63014.50 | GASKET                     | 1      |
| 026    | 45.00667.00  | SPINDLE                    | 1      |
| 027    | 45.00665.00  | CYLINDER ROD HEAD          | 2      |
| 028    | 45.00666.00  | BEARING                    | 4      |
| 029    | 901.08000.33 | GREASER DIN71412-A M8x1,25 | 6      |
| 030    | 15.00832.00  | PANEL                      | 4      |
| 031    | 603.06015.86 | SCREW DIN933 M6x15         | 8      |
| 032    | 104.06000.00 | WASHER DIN7980 D6          | 8      |
| 033    | 45.00650.01  | CON ROD                    | 2      |
| 034    | 45.00650.00  | CON ROD                    | 2      |
| 035    | 45.00653.00  | SHAFT CIL/COA              | 4      |
| 036    | 45.00647.04  | AXLE CIL/RPA               | 1      |
| 036    | 45.00647.03  | AXLE CIL/RPA               | 1      |
| 037    | 45.00648.00  | SHAFT CIL/CIL              | 2      |
| 038    | 307.30017.01 | WASHER DIN125              | 2      |
| 039    | 45.00644.01  | NUT                        | 2      |
| 040    | 401.04030.60 | SPLIT PIN DIN94 4x30       | 2      |
| 041    | 701.09000.66 | NUT                        | 2      |
| 042    | 45.00670.00  | CUBO RUEDA COMP.           | 2      |
| 043    | 202.50008.50 | SEAL DIN3760               | 2      |
| 044    | 307.40019.00 | BEARING DIN720             | 2      |
| 045    | 307.30017.01 | WASHER DIN125              | 2      |
| 046    | 906.25000.00 | WASHER                     | 2      |
| 047    | 45.00658.00  | NUT                        | 2      |
| 048    | 45.00649.02  | WHEEL HUB                  | 2      |
| 049    | 45.00452.00  | SCREW FASTENING WHEEL      | 10     |

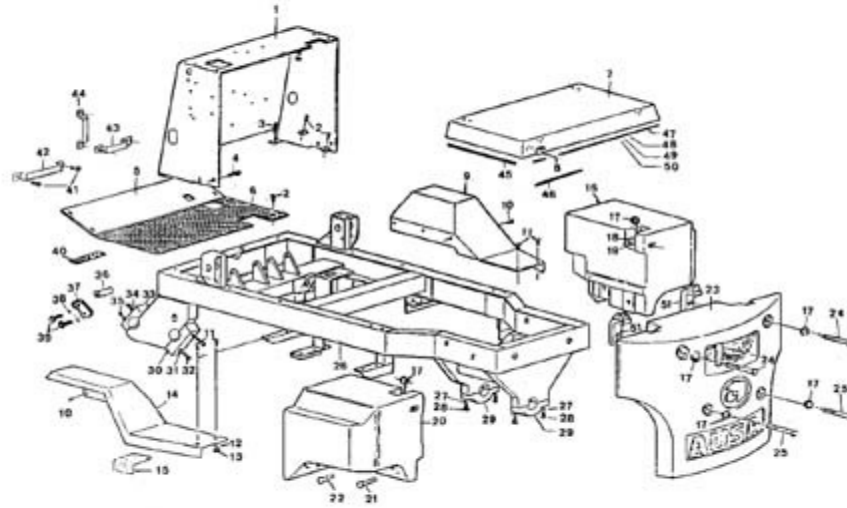
|     |              |                    |    |
|-----|--------------|--------------------|----|
| 050 | 45.00588.00  | NUT DIN982 M16x1,5 | 10 |
| 051 | 45.00654.01  | HUBCAP             | 2  |
| 052 | 104.06000.00 | WASHER DIN7980 D6  | 8  |
| 053 | 601.06010.86 | SCREW              | 8  |

**TRANSMISSION  
REAR AXLE**

| <b>FIGURE</b> | <b>REFERENCE</b> | <b>DENOMINATION</b>   | <b>AMOUNT</b> |
|---------------|------------------|-----------------------|---------------|
| 054           | 01.00312.00      | SCREW DIN417*         | 2             |
| 055           | 104.16000.00     | CIR-CLIP EXT. DIN7980 | 4             |
| 056           | 939.30020.00     | BEARING               | 2             |
| 057           | 45.99640RE04     | GASKET SET            | 1             |

# 04. CHASSIS

## CHASSIS. COUNTERWEIGHTS AND PROTECTORS



| FIGURE | REFERENCE    | DENOMINATION                   | AMOUNT |
|--------|--------------|--------------------------------|--------|
| 001    | 43.10870.01  | SOP. ANG. TABLIER              | 1      |
| 002    | 603.08020.86 | SCREW DIN933 M8x20             | 8      |
| 003    | 603.12025.86 | SCREW DIN933                   | 2      |
| 004    | 603.12035.86 | SCREW DIN933                   | 4      |
| 005    | 43.10778.00  | PLANCHA PEDAL ACEL.            | 1      |
| 006    | 45.00776.01  | PLANCHA PISO 4x343x715         | 1      |
| 007    | 45.00781.12  | TAPA REGISTRO MOTOR            | 1      |
| 008    | 01.07243.00  | BRACKET ANG.                   | 3      |
| 009    | 45.01037.11  | GUARDABARROS DER.              | 1      |
| 010    | 603.08015.86 | SCREW DIN933 M8x15             | 6      |
| 011    | 605.10020.66 | SCREW DIN603                   | 4      |
| 012    | 104.10000.00 | WASHER DIN7980 D10             | 16     |
| 013    | 701.10000.66 | NUT DIN934 M10x1.5             | 4      |
| 014    | 45.01038.11  | GUARDABARROS 742x208 IZQ.      | 1      |
| 015    | 45.01465.00  | SUPLEMENTO ANTIDESLIZ. 100X200 | 2      |
| 016    | 45.00950.21  | CONTRAPESO DER.                | 1      |

|     |              |                         |    |
|-----|--------------|-------------------------|----|
| 017 | 15.00561.00  | WASHER DIN125 20.5x45x5 | 10 |
| 018 | 701.20250.66 | NUT                     | 8  |

## 04. CHASSIS

### CHASSIS. COUNTERWEIGHTS AND PROTECTORS

| FIGURE | REFERENCE    | DENOMINATION                  | AMOUNT |
|--------|--------------|-------------------------------|--------|
| 019    | 104.20000.00 | CIR-CLIP EXT. DIN7980         | 8      |
| 020    | 45.00951.20  | CONTRAPESO LATERAL IZQ.       | 1      |
| 021    | 604.20110.86 | SCREW DIN931                  | 2      |
| 022    | 604.20100.86 | SCREW DIN931                  | 2      |
| 023    | 45.00952.20  | CONTRAPESO TRAS.              | 1      |
| 024    | 604.20210.86 | TORNILLO DIN931 M20x210       | 2      |
| 025    | 604.20160.86 | SCREW DIN931 M20x160          | 2      |
| 026    | 45.00800.12  | Chassis                       | 1      |
| 027    | 104.12000.00 | WASHER DIN7980 D12            | 4      |
| 028    | 603.12050.86 | SCREW DIN933                  | 4      |
| 029    | 45.00847.00  | COJINETE SOPORTE PUENTE       | 2      |
| 030    | 45.10175.00  | TAPA APOYO PORTICO            | 2      |
| 031    | 104.16000.00 | CIR-CLIP EXT. DIN7980         | 4      |
| 032    | 604.16090.86 | SCREW DIN931                  | 4      |
| 033    | 45.10175.00  | TAPA APOYO PORTICO            | 2      |
| 034    | 104.12000.00 | WASHER DIN7980 D12            | 4      |
| 035    | 604.12060.80 | SCREW DIN931                  | 2      |
| 036    | 08.00135.00  | SHAFT CIL/COA                 | 2      |
| 037    | 15.00832.00  | PANEL                         | 2      |
| 038    | 104.06000.00 | WASHER DIN7980 D6             | 4      |
| 039    | 603.06015.86 | SCREW DIN933 M6x15            | 4      |
| 040    | 45.00152.00  | TOPE. 3x20x280 GOMA           | 1      |
| 041    | 603.06015.86 | SCREW DIN933 M6x15            | 6      |
| 042    | 43.11437.00  | CLAMP                         | 1      |
| 043    | 45.00335.00  | CLAMP DIN72573*               | 1      |
| 044    | 43.01036.00  | CLAMP DIN72573                | 1      |
| 045    | 45.80120.00  | PERFIL GOMA 16x23x390         | 2      |
| 046    | 58.10926.00  | PERFIL GOMA 10x20x350 ESPONJA | 2      |
| 047    | 45.80125.00  | PERFIL GOMA 16x23x1440        | 1      |
| 048    | 45.80124.00  | ABSORBENTE ACUSTICO 30X42X620 | 1      |
| 049    | 45.80123.00  | ABSORBENTE ACUSTICO 30x50x390 | 2      |
| 050    | 45.80122.00  | ABSORBENTE ACUSTICO 30x50x720 | 1      |



051

45.00785.01

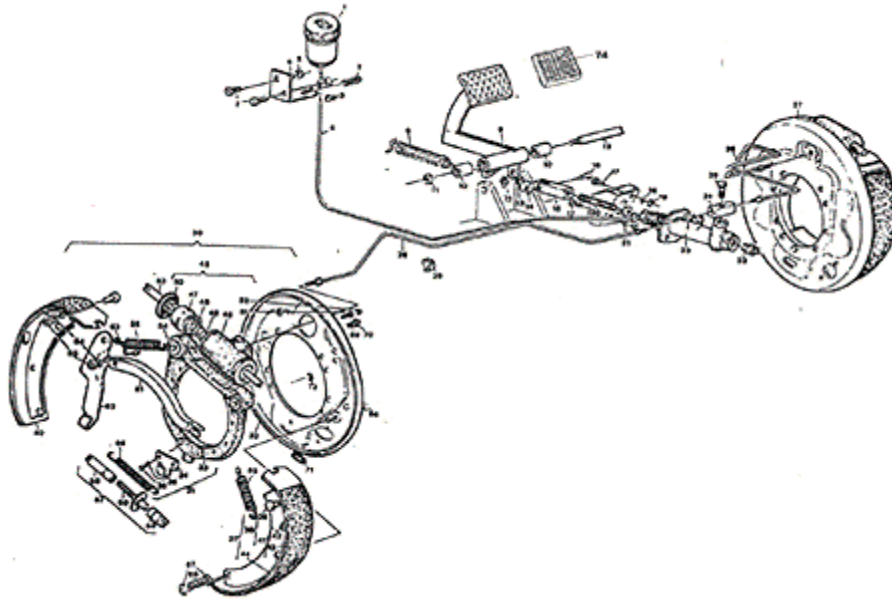
SOPORTE

1



# BRAKE ACTIVATION

## FOOT BRAKE



| FIGURE | REFERENCE    | DENOMINATION               | AMOUNT |
|--------|--------------|----------------------------|--------|
| 001    | 43.00751.01  | BRAKING LIQUID TANK        | 1      |
| 001    | 45.00407.51  | TIE ROD                    | 1      |
| 002    | 15.00836.01  | PIN DIN11024               | 1      |
| 003    | 912.09000.66 | CLAMP                      | 2      |
| 004    | 43.00750.03  | TUBO PLAS. TRANS. 6x9x1080 | 1      |
| 005    | 701.05000.66 | NUT DIN934 M5x0.8          | 3      |
| 006    | 104.05000.00 | WASHER DIN7980 D5          | 3      |
| 007    | 603.05015.86 | SCREW DIN933               | 3      |
| 008    | 01.00223.01  | SPRING TENSION             | 1      |
| 009    | 43.00740.01  | PEDAL FRENO 80x215x230     | 1      |
| 010    | 923.18030.00 | BEARING                    | 2      |
| 011    | 701.12000.66 | NUT DIN934 M12x1.75        | 1      |
| 012    | 45.00520.00  | AXLE COR/ROS               | 1      |
| 013    | 401.02025.60 | PIN DIN94 2x25             | 1      |
| 014    | 101.08000.66 | WASHER DIN125 D8           | 1      |
| 015    | 01.00564.01  | ART. FORK                  | 1      |
| 016    | 01.00514.02  | AXLE CIL/CPA               | 1      |
| 017    | 603.08025.86 | SCREW DIN933 M8x25         | 2      |
| 018    | 104.08000.00 | WASHER DIN7980 D8          | 2      |
| 019    | 711.08000.66 | NUT DIN982 M8              | 2      |
| 020    | 43.00576.11  | ROD STRAIGHT R7/16         | 1      |
| 021    | 01.01304.00  | NUT                        | 2      |

|     |              |                       |   |
|-----|--------------|-----------------------|---|
| 022 | 46.00747.20  | BRAKE PUMP            | 1 |
| 023 | 43.01521.00  | SWITCH                | 1 |
| 024 | 31.01064.00  | NIPPLE O/H/H          | 1 |
| 025 | 31.01065.00  | NIPPLE SCREW SIM.     | 1 |
| 026 | 45.00773.01  | TUBE BUNDY3           | 1 |
| 027 | 46.00404.00  | BRAKE                 | 1 |
| 028 | 45.00774.01  | TUBE BUNDY3           | 1 |
| 029 | 929.05000.00 | TUBE GUIDE SUPPORT    | 4 |
| 030 | 46.00403.00  | BRAKE                 | 1 |
| 031 | 45.00408.20  | BRAKE PLATE (RIGHT)   | 1 |
| 031 | 45.00407.20  | KIT BRAKE SHOE (LEFT) | 1 |
| 032 | 45.00408.21  | BRAKE PLATE           | 1 |
| 032 | 45.00407.21  | BRAKE PLATE           | 1 |
| 033 | 45.00408.22  | BRAKE SHOE SUPPORT    | 1 |

**BRAKE ACTIVATION  
FOOT BRAKE**

| <b>FIGURE</b> | <b>REFERENCE</b> | <b>DENOMINATION</b> | <b>AMOUNT</b> |
|---------------|------------------|---------------------|---------------|
| 033           | 45.00408.22      | BRAKE SHOE SUPPORT  | 1             |
| 034           | 45.00408.23      | CLAMP LOOP          | 1             |
| 035           | 45.00408.24      | SCREW               | 7             |
| 036           | 45.00408.25      | WASHER AL           | 7             |
| 037           | 45.00408.26      | BRAKE SHOE          | 1             |
| 037           | 45.00407.26      | BRAKE SHOE          | 1             |
| 038           | 45.00408.27      | BRAKE SHOE          | 1             |
| 038           | 45.00407.27      | BRAKE SHOE          | 1             |
| 039           | 45.00408.28      | SHAFT CIL/CIL       | 1             |
| 040           | 45.00408.29      | BRAKE SHOE          | 2             |
| 041           | 45.00408.30      | BRAKE SHOE          | 2             |
| 042           | 45.00408.31      | BRAKE SHOE          | 2             |
| 043           | 45.00408.32      | BRAKE SHOE          | 2             |
| 044           | 45.00408.33      | LINING BRAKESHOE    | 2             |
| 045           | 45.00408.34      | BRAKE CYLINDER      | 1             |
| 046           | 45.00408.35      | CASING PUMP         | 1             |
| 047           | 45.00408.36      | EMBOLO              | 1             |
| 048           | 45.00408.37      | SPRING SUPPORT      | 2             |
| 049           | 45.00408.38      | SPRING COMPRESSION  | 1             |
| 050           | 45.00408.39      | DUST EXCLUDER       | 2             |

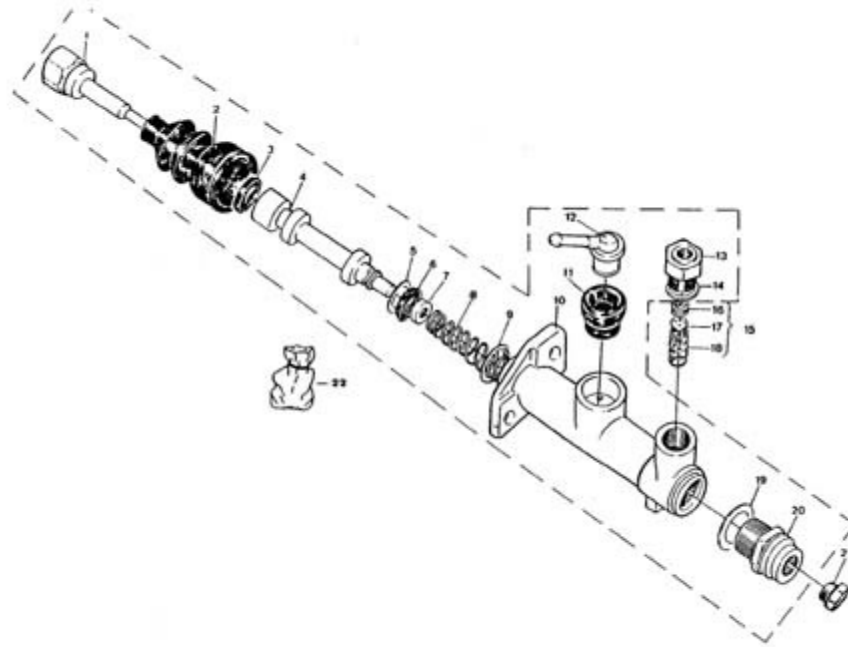
|     |             |                             |   |
|-----|-------------|-----------------------------|---|
| 051 | 45.00408.40 | TORNILLO PURGA BOMBIN FRENO | 1 |
| 052 | 45.00408.41 | CAP                         | 1 |
| 053 | 45.00408.42 | ROD                         | 1 |
| 054 | 45.00408.43 | BUTT                        | 2 |
| 055 | 45.00408.44 | SPRING TENSION              | 2 |
| 056 | 45.00408.45 | SPRING TENSION              | 2 |
| 057 | 45.00408.46 | TENSIONER                   | 1 |
| 058 | 45.00408.46 | TENSIONER                   | 1 |
| 059 | 45.00408.46 | TENSIONER                   | 1 |
| 060 | 45.00408.46 | TENSIONER                   | 1 |
| 061 | 45.00407.50 | TIE ROD                     | 1 |
| 061 | 45.00408.50 | TIE ROD                     | 1 |
| 062 | 45.00408.51 | TIE ROD                     | 1 |
| 063 | 45.00408.52 | SHAFT CAS/CIL               | 2 |
| 064 | 45.00408.55 | SHAFT CIL/CIL               | 2 |
| 065 | 45.00408.54 | CLIP                        | 2 |

## BRAKE ACTIVATION

### FOOT BRAKE

| FIGURE | REFERENCE    | DENOMINATION               | AMOUNT |
|--------|--------------|----------------------------|--------|
| 066    | 45.00408.55  | SHAFT CIL/CIL              | 2      |
| 067    | 45.00408.56  | SPRING SUPPORT             | 4      |
| 068    | 45.00408.57  | SPRING COMPRESSION         | 2      |
| 069    | 45.00408.58  | SCREW DIN912               | 2      |
| 070    | 701.08000.66 | NUT DIN934 M8X1,25         | 2      |
| 071    | 45.00408.60  | CAP                        | 1      |
| 072    | 45.00408.61  | CAP                        | 1      |
| 073    | 901.08000.33 | GREASER DIN71412-A M8x1,25 | 1      |
| 074    | 43.07310.01  | PANEL                      | 1      |

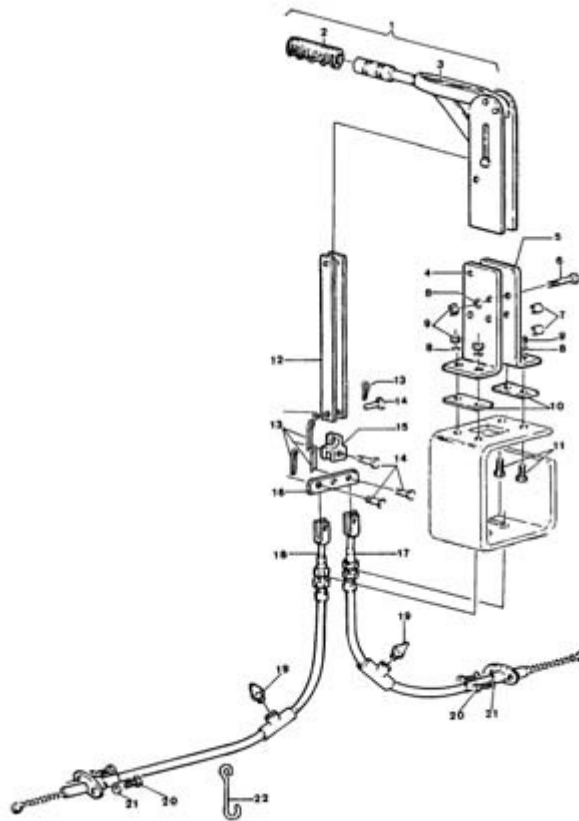
# BRAKE ACTIVATION BRAKE PUMP



| FIGURE | REFERENCE   | DENOMINATION  | AMOUNT |
|--------|-------------|---------------|--------|
| 001    | 46.00747.20 | BRAKE PUMP    | 1      |
| 015    | 43.00747.34 | VALVE         | 1      |
| 021    | 15.07780.00 | SCREW DIN910* | 1      |
| 022    | 43.00747.90 | GASKET SET    | 1      |

# BRAKE ACTIVATION

## PARKING BRAKE



| FIGURE | REFERENCE    | DENOMINATION                   | AMOUNT |
|--------|--------------|--------------------------------|--------|
| 001    | 45.07550.01  | PALANCA ACC. FRENO             | 1      |
| 002    | 43.07550.00  | FRENO MANO COMP.               | 1      |
| 003    | 43.00755.01  | CONTROL LEVER                  | 1      |
| 004    | 45.00757.02  | SUPLEMENTO 38x60x88 IZQ. FRENO | 1      |
| 005    | 45.00756.02  | SUPLEMENTO 38x60x88 DER. FRENO | 1      |
| 006    | 604.08050.86 | SCREW DIN931                   | 3      |
| 007    | 43.00758.01  | ACC. FORK                      | 3      |
| 008    | 104.08000.00 | WASHER DIN7980 D8              | 7      |
| 009    | 701.08000.66 | NUT DIN934 M8X1,25             | 7      |
| 010    | 45.00758.00  | SEPARADOR                      | 2      |
| 011    | 603.08025.86 | SCREW DIN933 M8x25             | 4      |
| 012    | 45.00529.02  | TIRANTE 4x18x200 FRENO         | 2      |
| 013    | 401.02025.60 | PIN DIN94 2x25                 | 4      |
| 014    | 01.00514.01  | AXLE CIL/CPA 14x8x28           | 5      |
| 015    | 43.00765.00  | DOUBLE FORK                    | 1      |
| 016    | 43.00766.00  | STRIP SUPPORT                  | 1      |

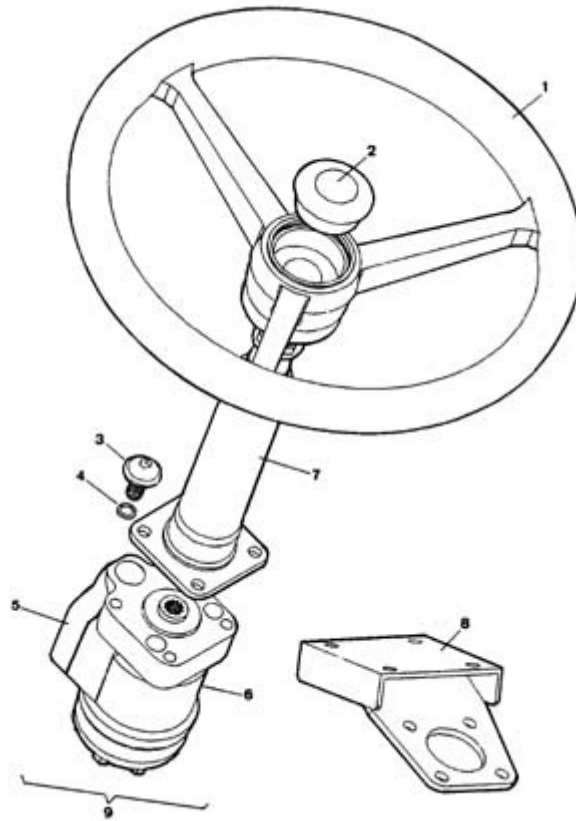
|     |             |             |   |
|-----|-------------|-------------|---|
| 017 | 45.00706.01 | BRAKE CABLE | 1 |
| 018 | 45.00707.01 | BRAKE CABLE | 1 |

## **BRAKE ACTIVATION PARKING BRAKE**

| <b>FIGURE</b> | <b>REFERENCE</b> | <b>DENOMINATION</b>        | <b>AMOUNT</b> |
|---------------|------------------|----------------------------|---------------|
| 019           | 901.08000.33     | GREASER DIN71412-A M8x1,25 | 2             |
| 020           | 603.08010.86     | SCREW DIN933 M8x10         | 4             |
| 021           | 104.08000.00     | WASHER DIN7980 D8          | 4             |
| 022           | 45.00715.00      | GANCHO CABLE FRENO         | 1             |
| 023           | 116.06000.00     | WASHER                     | 4             |

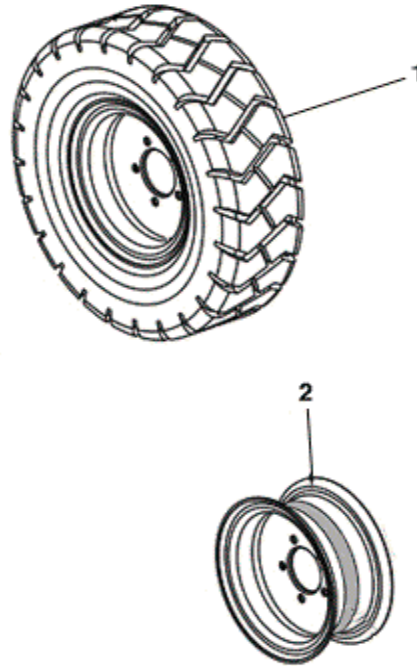
# STEERING

## STEERING



| FIGURE | REFERENCE    | DENOMINATION                       | AMOUNT |
|--------|--------------|------------------------------------|--------|
| 001    | 15.01016.01  | STEERING WHEEL D21-315 WITH POMMEL | 1      |
| 002    | 00.00626.01  | TRIM                               | 1      |
| 003    | 618.10030.86 | SCREW                              | 4      |
| 004    | 104.10000.00 | WASHER DIN7980 D10                 | 4      |
| 005    | 45.01003.00  | VALVE                              | 1      |
| 006    | 45.01005.00  | STEERING VALVE                     | 1      |
| 007    | 09.10680.00  | STEERING COLUMM                    | 1      |
| 008    | 43.10680.02  | STEERING SUPPORT                   | 1      |
| 009    | 45.01005.00  | STEERING VALVE                     | 1      |

**WHEEL**  
**ROUES AVANT**

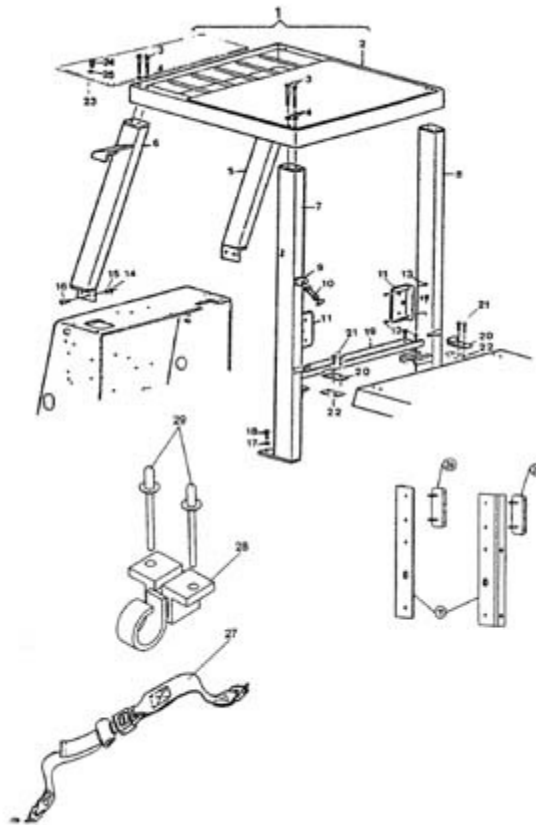


| FIGURE | REFERENCE    | DENOMINATION        | AMOUNT |
|--------|--------------|---------------------|--------|
| 001    | 45.00901.00  | WHEEL 12`X12PR 7.00 | 2      |
| 001    | 11.00901DE21 | WHEEL RIM           | 2      |
| 004    | 47.00922.20  | WHEEL RIM           | 2      |
| 004    | 45.00911.00  | RIM 12 5.00S        | 1      |
| 005    | 45.00902.00  | WHEEL RIM           | 2      |
| 005    | 45.00902.01  | WHEEL RIM           | 2      |
| 008    | 45.00920.02  | WHEEL RIM           | 1      |
| 008    | 45.00920.00  | WHEEL RIM 4.00-9`   | 1      |



# BODY

## DRIVER PROTECTOR ROOF



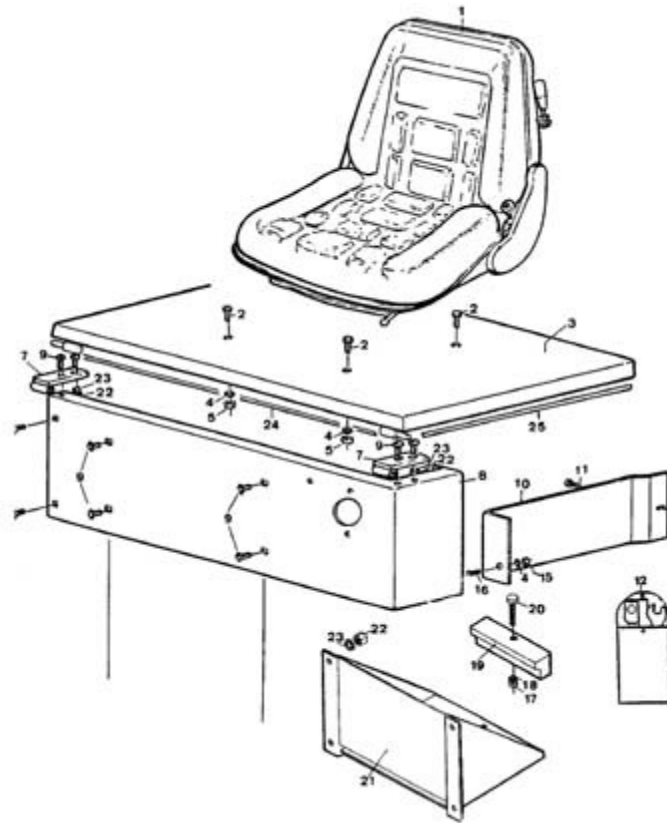
| FIGURE | REFERENCE    | DENOMINATION                   | AMOUNT |
|--------|--------------|--------------------------------|--------|
| 001    | 45.00891.01  | TRAVESAIO 40x80x730 TECHO PROT | 1      |
| 002    | 45.08910.00  | PROT. CONDUCTOR 860x730x80     | 1      |
| 003    | 604.12100.86 | SCREW DIN931 M12x100           | 8      |
| 004    | 104.12000.00 | WASHER DIN7980 D12             | 8      |
| 005    | 43.10892.14  | MONT.DELANT. D. CE-16 CE-CH-2  | 1      |
| 006    | 43.10892.15  | MONT.DELANT. I CE-16 CE-CH-20  | 1      |
| 007    | 45.00896.03  | MONTANTE TRASERO IZQ. CE-16    | 1      |
| 008    | 45.00897.03  | TUBO MONTANTE 80x40x1350 DER.  | 1      |
| 009    | 01.07241.00  | SUPPORT ART.                   | 3      |
| 010    | 01.00724RE00 | LATCH                          | 3      |
| 011    | 45.01113.01  | LIGHT SUPPORT                  | 2      |
| 012    | 603.06020.86 | SCREW DIN933 M6x20             | 8      |
| 013    | 16.01155.00  | GROMMET D11XD15XD19X4X8        | 10     |
| 014    | 701.14000.86 | NUT                            | 4      |
| 015    | 104.14000.00 | CIR-CLIP EXT. DIN7980          | 4      |
| 016    | 603.14035.86 | SCREW DIN933                   | 4      |

|     |              |                     |   |
|-----|--------------|---------------------|---|
| 017 | 104.10000.00 | WASHER DIN7980 D10  | 8 |
| 018 | 603.10020.86 | SCREW DIN933 M10x20 | 8 |

**BODY**  
**DRIVER PROTECTOR ROOF**

| <b>FIGURE</b> | <b>REFERENCE</b> | <b>DENOMINATION</b> | <b>AMOUNT</b> |
|---------------|------------------|---------------------|---------------|
| 019           | 45.00972.01      | TAPA.               | 1             |
| 020           | 43.10734.00      | SUPPORT ART.        | 2             |
| 021           | 618.08025.86     | SCREW DIN7991       | 4             |
| 022           | 43.10731.00      | STRIP               | 2             |
| 023           | 45.00891.29      | DRIVER GUARD        | 1             |
| 024           | 603.06015.86     | SCREW DIN933 M6x15  | 3             |
| 025           | 112.06000.66     | WASHER DIN9021 D6   | 3             |
| 026           | 14.40901.00      | RED REFLECTOR       | 2             |
| 027           | 45.60002.01      | BELT                | 1             |
| 028           | 01.01925.00      | LATCH               | 1             |
| 029           | 502.05000.60     | RIVET DIN1476       | 2             |

**BODY  
SEAT**



| FIGURE | REFERENCE    | DENOMINATION              | AMOUNT |
|--------|--------------|---------------------------|--------|
| 001    | 43.00790RE02 | DRIVERS SEAT              | 1      |
| 001    | 58.00942.00  | ASIEN TO CONDUCTOR        | 1      |
| 002    | 603.08025.80 | SCREW DIN933              | 4      |
| 003    | 45.00971.03  | TAPA. 30x488x760 MOTOR    | 1      |
| 004    | 104.08000.00 | WASHER DIN7980 D8         | 4      |
| 005    | 701.08000.66 | NUT DIN934 M8X1,25        | 4      |
| 006    | 603.08020.86 | SCREW DIN933 M8x20        | 4      |
| 007    | 43.00782.00  | SUPPORT ART.              | 2      |
| 008    | 45.00970.11  | TAPA. 67x268x749          | 1      |
| 009    | 604.10030.86 | SCREW DIN931              | 10     |
| 010    | 45.01467.01  | PLANCHA CAJA HERRAMIENTAS | 1      |
| 011    | 603.06015.86 | SCREW DIN933 M6x15        | 1      |
| 012    | 01.00036.02  | TOOLS-BAG                 | 1      |
| 015    | 701.09000.66 | NUT                       | 1      |
| 016    | 603.08020.86 | SCREW DIN933 M8x20        | 1      |
| 017    | 701.06000.66 | NUT DIN934 M6X1           | 4      |

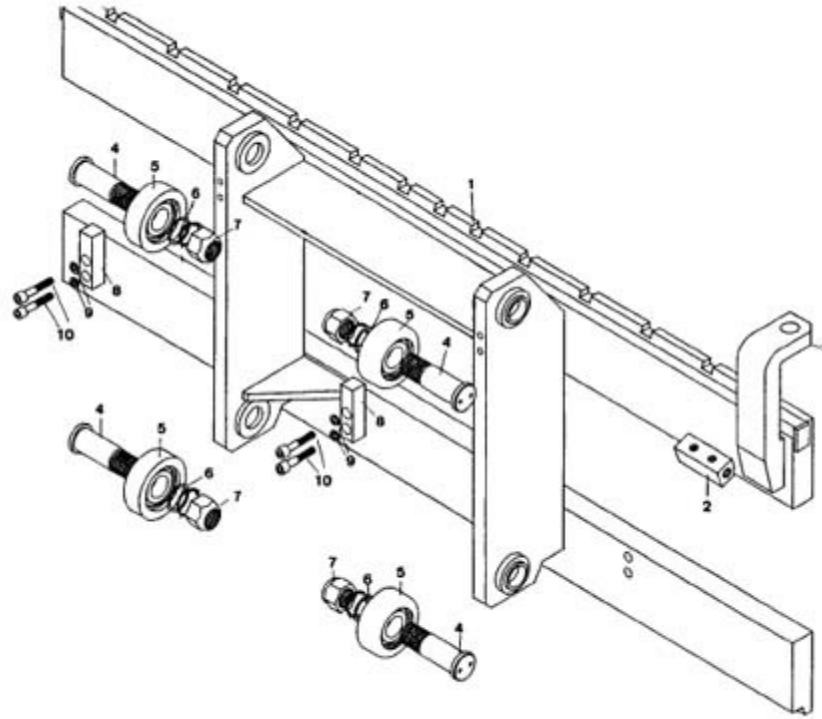
|     |              |                   |   |
|-----|--------------|-------------------|---|
| 018 | 104.06000.00 | WASHER DIN7980 D6 | 1 |
| 019 | 43.10827.00  | FIXING SUPPORT    | 1 |

**BODY  
SEAT**

| <b>FIGURE</b> | <b>REFERENCE</b> | <b>DENOMINATION</b>      | <b>AMOUNT</b> |
|---------------|------------------|--------------------------|---------------|
| 020           | 603.06030.86     | SCREW DIN933 M6x30       | 2             |
| 021           | 46.14100.00      | SOP. BATERIA 145x221x232 | 1             |
| 022           | 701.10000.66     | NUT DIN934 M10x1.5       | 8             |
| 023           | 104.10000.00     | WASHER DIN7980 D10       | 8             |
| 024           | 45.80126.00      | PERFIL GOMA 16x23x588    | 1             |
| 025           | 45.80120.00      | PERFIL GOMA 16x23x390    | 2             |

# MACHINE OPERATION TOOLS

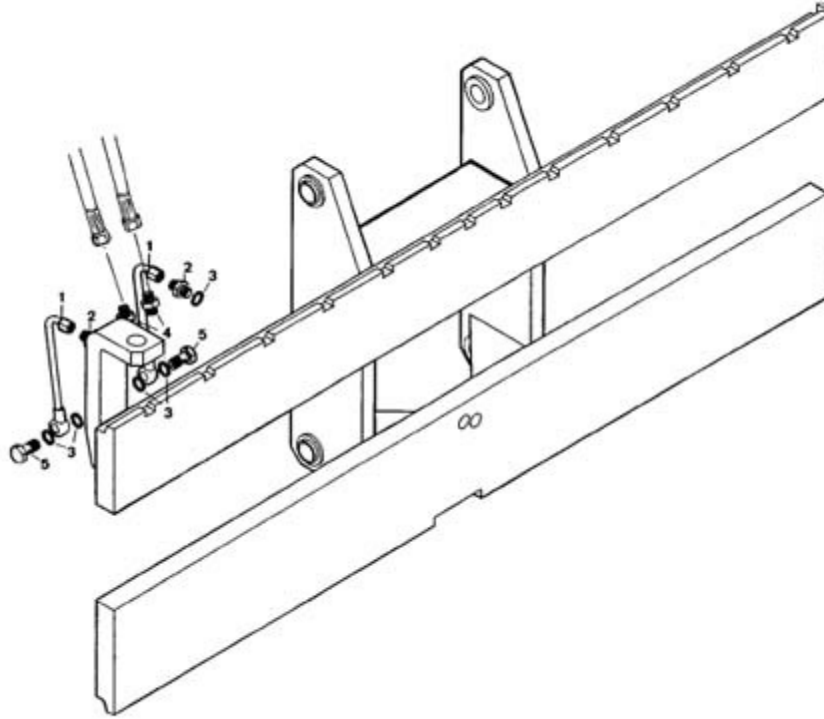
## PORT-FORK PLATE



| FIGURE | REFERENCE    | DENOMINATION      | AMOUNT |
|--------|--------------|-------------------|--------|
| 001    | 45.20400RE01 | FORK CARRIAGE     | 1      |
| 001    | 45.20400.03  | FORK CARRIAGE     | 1      |
| 002    | 19.00520.01  | NIPPLE            | 1      |
| 003    | 28.00300.12  | SOP. ANG. CIL.    | 1      |
| 004    | 43.01396.00  | AXLE CPL/ROS      | 4      |
| 005    | 43.01341.01  | ROLLER            | 4      |
| 006    | 43.01347.01  | WASHER ADJUST.    | 1      |
| 006    | 43.01347.04  | WASHER ADJUST.    | 1      |
| 006    | 43.01347.03  | WASHER ADJUST.    | 1      |
| 006    | 43.01347.04  | WASHER ADJUST.    | 1      |
| 007    | 720.27000.66 | NUT               | 1      |
| 008    | 16.01331.00  | BUTT              | 2      |
| 009    | 104.08000.00 | WASHER DIN7980 D8 | 4      |
| 010    | 16.01332.00  | SCREW DIN912*     | 4      |

# MACHINE OPERATION TOOLS

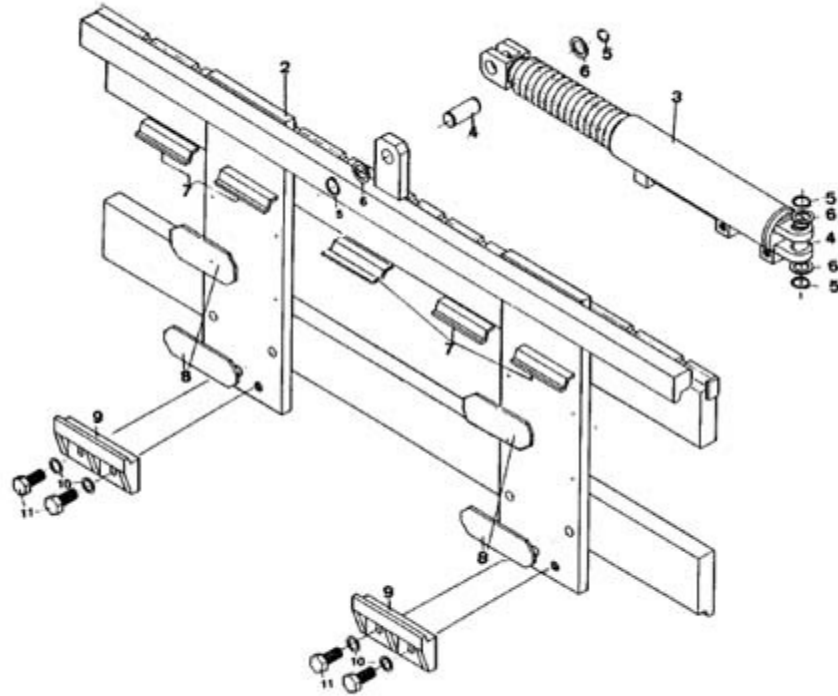
## PORTFORKS ACCESORIES



| FIGURE | REFERENCE   | DENOMINATION                  | AMOUNT |
|--------|-------------|-------------------------------|--------|
| 001    | 28.00509.00 | TUBE COPPER11                 | 2      |
| 002    | 19.00544.00 | NIPPLE M/M                    | 2      |
| 003    | 28.00341.00 | METALLIC GASKET BUNA D1/4     | 6      |
| 004    | 19.00720.00 | NIPPLE M/M                    | 2      |
| 005    | 28.00340.00 | SIMPLE SCREW FITTING 1/4 Gx26 | 2      |

# MACHINE OPERATION TOOLS

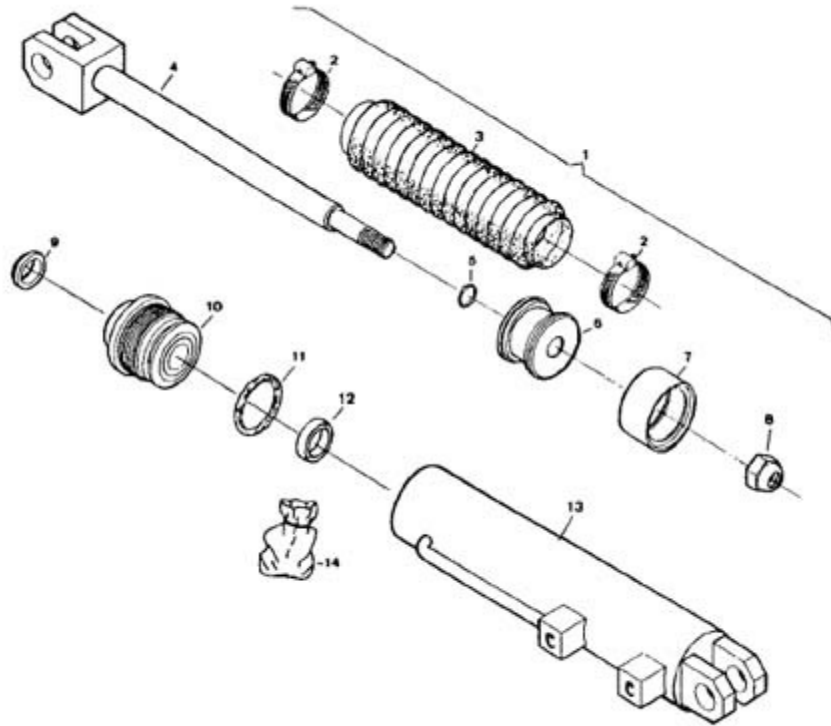
## LATERAL DISPLACEMENT



| FIGURE | REFERENCE    | DENOMINATION          | AMOUNT |
|--------|--------------|-----------------------|--------|
| 002    | 28.00100.31  | SIDE SHIFT            | 1      |
| 002    | 28.00100.30  | SIDE SHIFT            | 1      |
| 002    | 28.00100.32  | SIDE SHIFT            | 1      |
| 002    | 28.00100.33  | SIDE SHIFT            | 1      |
| 003    | 28.00200.03  | CYLINDER D/E          | 1      |
| 004    | 19.00301.00  | AXLE CPA/CPA          | 2      |
| 005    | 904.22000.00 | RING 0,5 MM.          | 4      |
| 006    | 10.00131.00  | WASHER AL             | 4      |
| 007    | 19.00302.01  | PROFILE               | 6      |
| 008    | 19.00303.00  | SHEET SUPPORT         | 4      |
| 009    | 19.00304.00  | GUIDE                 | 2      |
| 010    | 104.16000.00 | CIR-CLIP EXT. DIN7980 | 4      |
| 011    | 603.16035.86 | SCREW DIN933          | 4      |

# MACHINE OPERATION TOOLS

## DISPLACEMENT CYLINDER

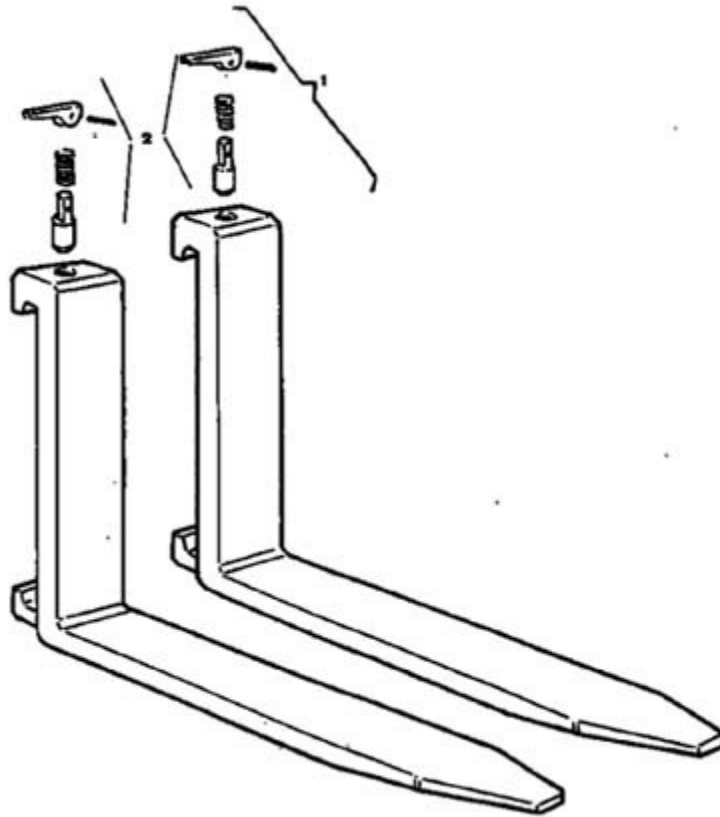


| FIGURE | REFERENCE    | DENOMINATION        | AMOUNT |
|--------|--------------|---------------------|--------|
| 001    | 28.00200.03  | CYLINDER D/E        | 1      |
| 002    | 920.42000.66 | ABRAZADERA DIN3017  | 2      |
| 003    | 45.01492.00  | DUST EXCLUDER       | 1      |
| 004    | 19.00215.01  | SPINDLE             | 1      |
| 005    | 201.01725.50 | O-RING DIN3770      | 1      |
| 006    | 19.00221.01  | PISTON              | 1      |
| 007    | 207.05543.50 | JUNTA DSP 55X43     | 1      |
| 008    | 718.16015.66 | NUT                 | 1      |
| 009    | 228.02230.50 | WIPER RING          | 1      |
| 010    | 19.00220.01  | GUIDE               | 1      |
| 011    | 201.04705.50 | O-RING DIN3770      | 1      |
| 012    | 229.02228.50 | GASKET DIN6505      | 1      |
| 013    | 45.01510.02  | TUBO CILINDRO COMP. | 1      |
| 014    | 28.99200RE03 | GASKET SET          | 1      |



# MACHINE OPERATION TOOLS

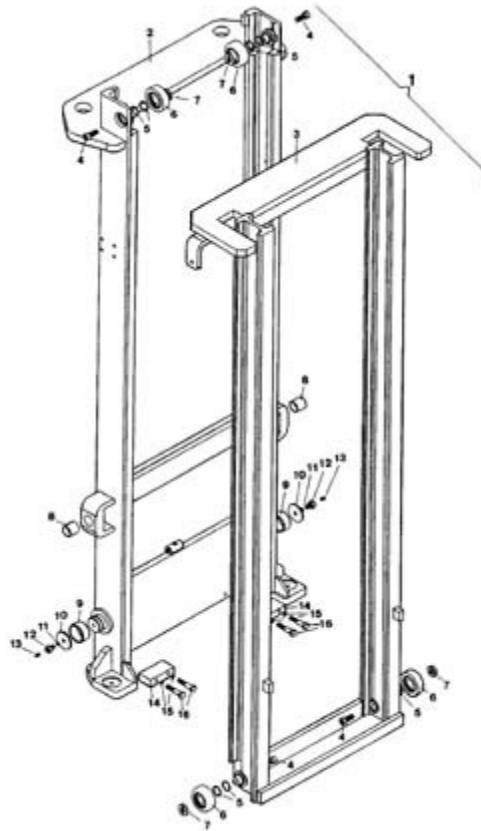
## FORKS



| FIGURE | REFERENCE   | DENOMINATION                 | AMOUNT |
|--------|-------------|------------------------------|--------|
| 001    | 45.01303.10 | FORK ARM                     | 1      |
| 001    | 45.01303.11 | BRAZO HORQ. EQUI 43.11303.11 | 1      |
| 001    | 45.11303.12 | BRAZO HORQ. 1200x546 FEMII   | 1      |
| 002    | 43.91303.00 | HITCH ASSEMBLY               | 2      |
| 002    | 45.91303.00 | HITCH ASSEMBLY               | 2      |

# MACHINE OPERATION TOOLS

## MAST



| FIGURE | REFERENCE   | DENOMINATION                  | AMOUNT |
|--------|-------------|-------------------------------|--------|
| 001    | 45.20000.00 | MASTIL 3,6M. COMP.            | 1      |
| 001    | 45.20000.01 | MASTIL 3M. COMP               | 1      |
| 001    | 45.20000.02 | MASTIL 2,5M. COMP.            | 1      |
| 001    | 45.20000.03 | MASTIL 4M. COMP.              | 1      |
| 001    | 45.20000.04 | MASTIL 4,5M. COMP.            | 1      |
| 001    | 45.20000.09 | MASTIL 3,3M. COMP.            | 1      |
| 002    | 45.20100.00 | C. MASTIL EXTERIOR 3.6 M PINT | 1      |
| 002    | 45.20100.01 | MASTIL 3M. EXT. PINT.         | 1      |
| 002    | 45.20100.02 | MASTIL 2,5M. EXT. PINT.       | 1      |
| 002    | 45.20100.03 | MASTIL 4M. EXT. AJUST.        | 1      |
| 002    | 45.20100.04 | MASTIL 4,5M. EXT. AJUST.      | 1      |
| 002    | 45.20100.09 | MASTIL 3,3M. EXT. PINT.       | 1      |
| 003    | 45.20200.00 | C. MASTIL INTERIOR 3.6 M PINT | 1      |
| 003    | 45.20200.01 | C. MASTIL INTERIOR 3M. PINT.  | 1      |
| 003    | 45.20200.02 | C. MASTIL INTERIOR 2.5 M PINT | 1      |
| 003    | 45.20200.03 | MASTIL 4M. INT. PINT.         | 1      |

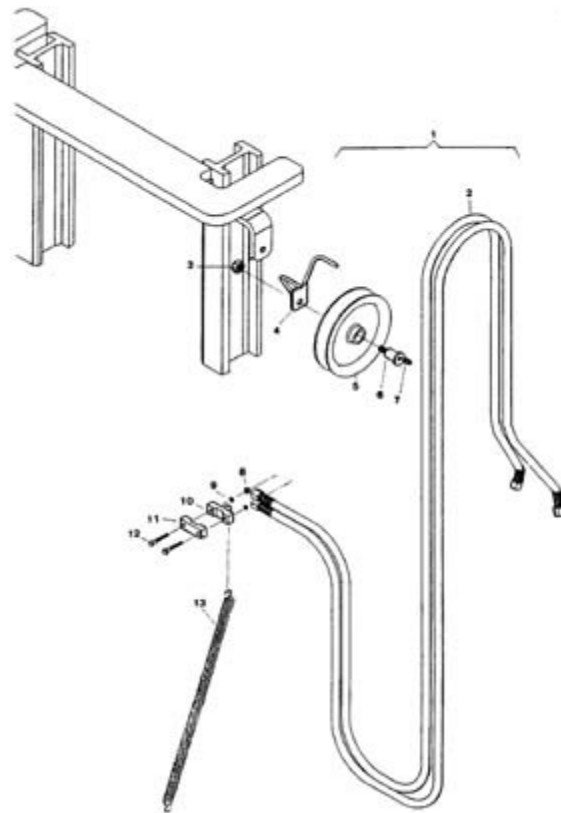
|     |             |                         |   |
|-----|-------------|-------------------------|---|
| 003 | 45.20200.04 | MASTIL 4,5M. INT. PINT. | 1 |
| 003 | 45.20200.09 | MASTIL 3,3M. INT. PINT. | 1 |

**MACHINE OPERATION TOOLS**  
**MAST**

| <b>FIGURE</b> | <b>REFERENCE</b> | <b>DENOMINATION</b>        | <b>AMOUNT</b> |
|---------------|------------------|----------------------------|---------------|
| 004           | 43.01334.00      | SCREW DIN912               | 4             |
| 005           | 43.01347.01      | WASHER ADJUST.             | 1             |
| 006           | 43.01341.01      | ROLLER                     | 4             |
| 007           | 43.01346.10      | BUSH                       | 2             |
| 008           | 08.00527.00      | BEARING                    | 2             |
| 009           | 10.09594.00      | RING 0,5 MM.               | 2             |
| 010           | 10.01317.00      | WASHER DIN9021 12.5x59x5   | 2             |
| 011           | 104.12000.00     | WASHER DIN7980 D12         | 2             |
| 012           | 10.01318.00      | CYLINDER ROD HEAD          | 2             |
| 013           | 901.08000.33     | GREASER DIN71412-A M8x1,25 | 2             |
| 014           | 43.01340.00      | BUTT                       | 2             |
| 015           | 104.12000.00     | WASHER DIN7980 D12         | 4             |
| 016           | 604.12060.80     | SCREW DIN931               | 4             |

# MACHINE OPERATION TOOLS

## DISPLACEMENT PANEL ACCESORIES



| FIGURE | REFERENCE    | DENOMINATION               | AMOUNT |
|--------|--------------|----------------------------|--------|
| 001    | 19.00500.02  | #N/A                       | 1      |
| 002    | 58.30366.05  | TUBE DR7                   | 1      |
| 002    | 45.01368.12  | TUBE DR7                   | 1      |
| 002    | 45.01368.10  | TUBE DR7                   | 1      |
| 002    | 45.01368.14  | TUBE DR7                   | 1      |
| 002    | 45.01368.13  | TUBE DR7                   | 1      |
| 003    | 701.14000.86 | NUT                        | 1      |
| 004    | 43.01364.00  | TUBE GUIDE SUPPORT         | 1      |
| 005    | 28.00318.10  | PULLEY                     | 1      |
| 006    | 28.00319.10  | AXLE COR/ROS               | 1      |
| 007    | 901.08000.33 | GREASER DIN71412-A M8x1,25 | 1      |
| 008    | 711.06000.66 | NUT DIN982 M6              | 2      |
| 009    | 104.06000.00 | WASHER DIN7980 D6          | 2      |
| 010    | 28.00345.01  | ARCH CLAMP                 | 1      |
| 011    | 28.00345.02  | ARCH CLAMP                 | 1      |
| 012    | 604.06045.86 | SCREW DIN931 M6x45         | 2      |

013

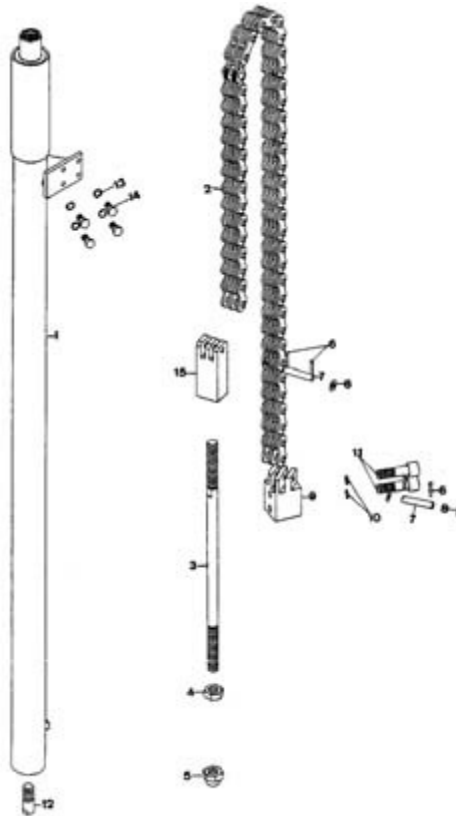
28.00322.02

SPRING TENSION

1

# MACHINE OPERATION TOOLS

## CHAIN MOUNTING



| FIGURE | REFERENCE   | DENOMINATION                   | AMOUNT |
|--------|-------------|--------------------------------|--------|
| 001    | 45.20323.00 | CILINDRO ELEVACION 3,6M D.COM  | 1      |
| 001    | 45.30325.00 | CILINDRO S/E 50x1780 3,6M. DER | 1      |
| 001    | 45.20323.01 | CILINDRO ELEVACION             | 1      |
| 001    | 45.30325.01 | CILINDRO S/E 50x1480 3M. DER.  | 1      |
| 001    | 45.20323.02 | CILINDRO ELEVACION 2,5M D.COM  | 1      |
| 001    | 45.30325.02 | CILINDRO S/E 50x1230 2,5M. DER | 1      |
| 001    | 45.20323.03 | CILINDRO ELEVACION 4M DER.COM  | 1      |
| 001    | 45.30325.03 | CYLINDER S/E                   | 1      |
| 001    | 45.20323.04 | CILINDRO ELEVACION 4,5M D.COM  | 1      |
| 001    | 45.30325.04 | CYLINDER S/E                   | 1      |
| 001    | 45.20323.09 | CILINDRO S/E 3,3M. DER.        | 1      |
| 001    | 45.30325.09 | CYLINDER S/E                   | 1      |
| 001    | 45.20324.00 | CILINDRO ELEVACION 3,6M I.COM  | 1      |
| 001    | 45.30324.00 | CILINDRO S/E 50x1780 3,6M. IZQ | 1      |
| 001    | 45.20324.01 | CILINDRO ELEVACION             | 1      |
| 001    | 45.30324.01 | CILINDRO S/E 50x1480 3M. IZQ.  | 1      |

|     |             |                                |   |
|-----|-------------|--------------------------------|---|
| 001 | 45.20324.02 | CILINDRO ELEVACION 2,5M I.COM  | 1 |
| 001 | 45.30324.02 | CILINDRO S/E 50x1230 2,5M. IZQ | 1 |

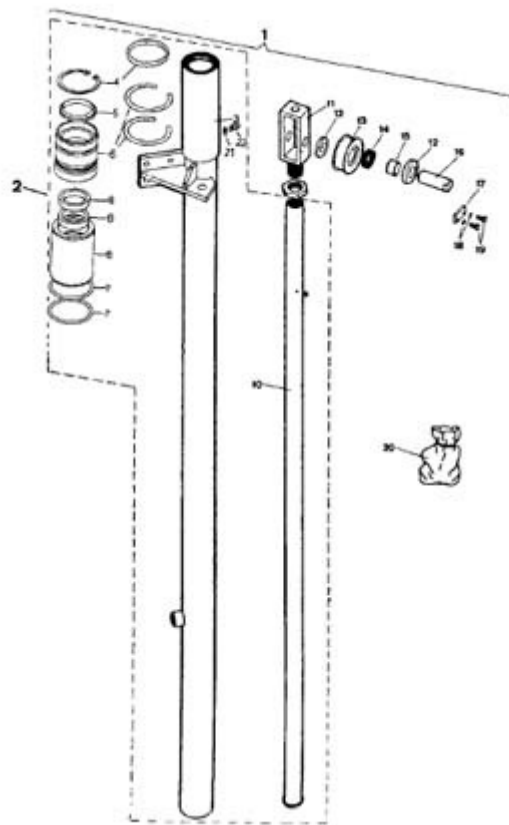
## MACHINE OPERATION TOOLS

### CHAIN MOUNTING

| FIGURE | REFERENCE    | DENOMINATION                   | AMOUNT |
|--------|--------------|--------------------------------|--------|
| 001    | 45.20324.03  | CILINDRO ELEVACION 4M IZQ.COM  | 1      |
| 001    | 45.30324.03  | CILINDRO S/E 50x1980 4M. IZQ.  | 1      |
| 001    | 45.20324.04  | CILINDRO ELEVACION 4,5M I.COM  | 1      |
| 001    | 45.30324.04  | CILINDRO S/E 50x2230 4,5M. IZQ | 1      |
| 001    | 45.20324.09  | CILINDRO S/E IZQ. COMP.        | 1      |
| 001    | 45.30324.09  | CYLINDER S/E                   | 1      |
| 002    | 45.20386.00  | CHAIN                          | 2      |
| 002    | 45.20386.01  | CHAIN                          | 2      |
| 002    | 45.20386.02  | CHAIN                          | 2      |
| 002    | 45.20386.03  | CHAIN                          | 2      |
| 002    | 45.20386.04  | CHAIN                          | 2      |
| 002    | 45.20386.09  | CHAIN                          | 2      |
| 003    | 45.20382.02  | TENSIONER CHAIN                | 2      |
| 004    | 01.01308.00  | NUT                            | 2      |
| 005    | 718.14000.66 | NUT DIN985 M14x1,5             | 2      |
| 006    | 401.02025.60 | PIN DIN94 2x25                 | 8      |
| 007    | 16.01328.00  | AXLE CPA/CPA                   | 4      |
| 008    | 101.08000.66 | WASHER DIN125 D8               | 8      |
| 009    | 45.20384.01  | CHAIN SUPPORT                  | 1      |
| 009    | 45.20384.02  | CHAIN SUPPORT                  | 1      |
| 010    | 104.12000.00 | WASHER DIN7980 D12             | 4      |
| 011    | 45.20390.01  | SCREW DIN912                   | 4      |
| 012    | 45.20140.00  | STUD                           | 2      |
| 013    | 104.10000.00 | WASHER DIN7980 D10             | 8      |
| 014    | 601.10025.86 | SCREW DIN912                   | 8      |
| 015    | 45.20388.00  | TENSIONER CHAIN                | 2      |

# MACHINE OPERATION TOOLS

## ELEVATION CYLINDER



| FIGURE | REFERENCE   | DENOMINATION                                      | AMOUNT |
|--------|-------------|---|--------|
| 001    | 45.20300.10 | CONJUNTO CILINDRO Y POLEA DERECHO ELEVACION 3.6 M | 1      |
| 001    | 45.20300.11 | CONJUNTO CILINDRO Y POLEA DERECHO ELEVACION 3     | 1      |
| 001    | 45.20300.12 | CONJUNTO CILINDRO Y POLEA DERECHO ELEVACION 2,5 M | 1      |
| 001    | 45.20300.13 | CONJUNTO CILINDRO Y POLEA DERECHO ELEVACION 4 M   | 1      |
| 001    | 45.20300.14 | CONJUNTO CILINDRO Y POLEA DERECHO ELEVACION 4,5 M | 1      |
| 001    | 45.20300.19 | CONJUNTO CILINDRO Y POLEA DERECHO ELEVACION 3,3 M | 1      |
| 001    | 45.20301.10 | CONJUNTO CILINDRO IZ. ELEVACION 3.6 M             | 1      |
| 001    | 45.20301.11 | CONJUNTO CILINDRO IZ. ELEVACION 3, M              | 1      |
| 001    | 45.20301.12 | CONJUNTO CILINDRO IZ. ELEVACION 2,5 M             | 1      |
| 001    | 45.20301.13 | CONJUNTO CILINDRO IZ. ELEVACION 4 M               | 1      |
| 001    | 45.20301.14 | CONJUNTO CILINDRO IZ. ELEVACION 4,5 M             | 1      |
| 001    | 45.20301.19 | CONJUNTO CILINDRO IZ. ELEVACION 3.3 M             | 1      |
| 003    | 45.20335.00 | CILINDRO ELEV. 3,6 M DER.                         | 1      |
| 003    | 45.20335.01 | CILINDRO ELEV.                                    | 1      |
| 003    | 45.20335.02 | CILINDRO ELEV. 2,5 M DER.                         | 1      |
| 003    | 45.20335.03 | CILINDRO ELEV. 4M DER.                            | 1      |



|     |             |                           |   |
|-----|-------------|---------------------------|---|
| 003 | 45.20335.04 | CILINDRO ELEV. 4,5 M DER. | 1 |
| 003 | 45.20335.09 | CILINDRO ELEV. 3,6 M DER. | 1 |

**MACHINE OPERATION TOOLS  
ELEVATION CYLINDER**

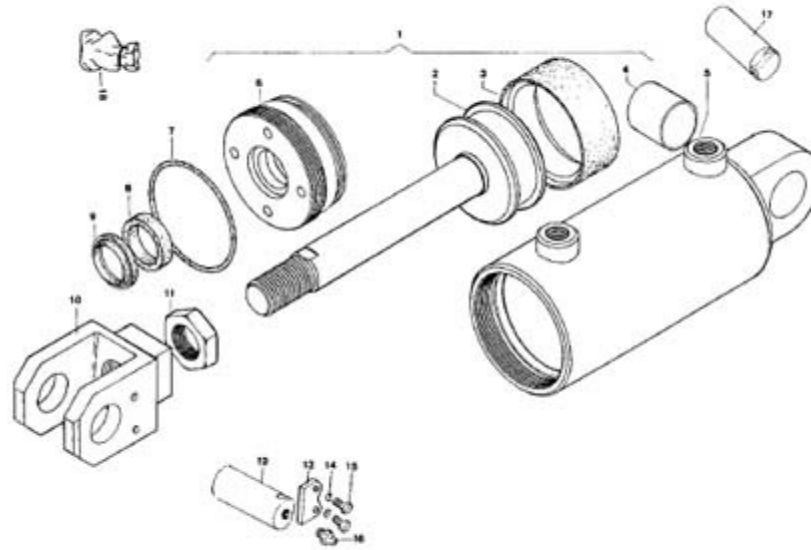
| <b>FIGURE</b> | <b>REFERENCE</b> | <b>DENOMINATION</b>                  | <b>AMOUNT</b> |
|---------------|------------------|--------------------------------------|---------------|
| 003           | 45.30336.09      | CUERPO CIL. D50x1812 DER.            | 1             |
| 003           | 45.20336.00      | CILINDRO ELEV. 3,6 M IZQ.            | 1             |
| 003           | 45.20336.01      | CILINDRO ELEV.                       | 1             |
| 003           | 45.20336.02      | CILINDRO ELEV. 2,5 M IZQ.            | 1             |
| 003           | 45.20336.03      | CILINDRO ELEV. 4M. IZQ.              | 1             |
| 003           | 45.20336.04      | CILINDRO ELEV. 4,5 M IZQ.            | 1             |
| 003           | 45.20336.09      | CILINDRO ELEV. 3,3 M IZQ.            | 1             |
| 003           | 45.30337.09      | CUERPO CIL. D50x1812 IZQ.            | 1             |
| 004           | 905.62000.00     | RING 0,5 MM.                         | 2             |
| 004           | 45.00999.00      | ANILLO. 45.5x50x4                    | 2             |
| 006           | 45.03631.11      | GASKET HOLDER                        | 2             |
| 006           | 45.01572.00      | RING                                 | 4             |
| 008           | 45.20360.03      | GUIDE                                | 2             |
| 010           | 45.20332.00      | VASTAGO CIL.                         | 2             |
| 010           | 45.20332.01      | PISTON                               | 2             |
| 010           | 45.20332.02      | PISTON 2,5 M COMP.                   | 2             |
| 010           | 45.20332.03      | CUERPO CIL. D35x2155 C/TAPON         | 2             |
| 010           | 45.20332.04      | PISTON 4,5 M COMP.                   | 2             |
| 010           | 45.20332.09      | CYL. BARREL                          | 2             |
| 010           | 45.30342.09      | VASTAGO 45x1747                      | 2             |
| 011           | 45.20381.00      | PULLEY SUPPORT                       | 2             |
| 012           | 45.20409.00      | WASHER DIN125                        | 4             |
| 013           | 45.20380.01      | PULLEY                               | 2             |
| 014           | 910.25020.00     | NEEDLE DIN5402                       | 80            |
| 015           | 905.25000.00     | ANILLO DIN472 I25                    | 2             |
| 016           | 10.16407.00      | SHAFT CIL/COA                        | 2             |
| 017           | 15.00832.00      | PANEL                                | 2             |
| 018           | 104.06000.00     | WASHER DIN7980 D6                    | 4             |
| 019           | 603.06015.86     | SCREW DIN933 M6x15                   | 4             |
| 020           | 45.99120.02      | GASKET SET 45.20323.24 & 45.20319.20 | 1             |
| 020           | 45.99120.03      | GASKET SET 45.30325.xx & 45.3024.xx  | 1             |
| 021           | 106.06000.20     | WASHER CU                            | 1             |



|     |              |               |   |
|-----|--------------|---------------|---|
| 022 | 10.12360.00  | SCREW DIN912* | 1 |
| 023 | 702.39016.86 | NUT           | 2 |

# MACHINE OPERATION TOOLS

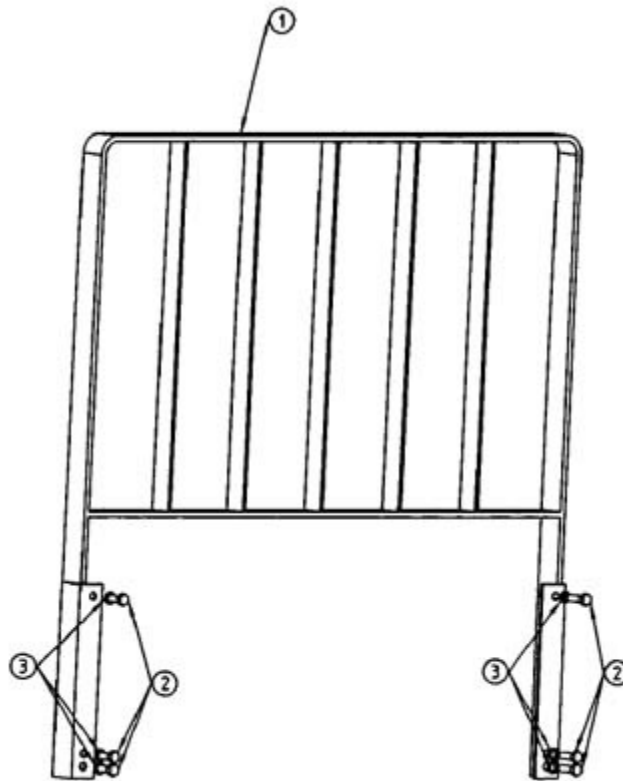
## INCLINATION CYLINDER



| FIGURE | REFERENCE    | DENOMINATION               | AMOUNT |
|--------|--------------|----------------------------|--------|
| 001    | 45.01100.01  | CONJ. CILINDRO INCLINACION | 2      |
| 001    | 45.01100.11  | CONJ. CILINDRO SOLDADO     | 2      |
| 002    | 45.01106.01  | EMBOLO SOLD. COMP.         | 1      |
| 004    | 08.00527.00  | BEARING                    | 1      |
| 005    | 45.01101.00  | CONJ. CILINDRO SOLDADO     | 1      |
| 006    | 10.01113.11  | GUIA VASTAGO               | 1      |
| 010    | 10.01115.01  | CYLINDER ROD HEAD          | 1      |
| 011    | 10.01117.00  | NUT DIN439                 | 1      |
| 012    | 08.00135.00  | SHAFT CIL/COA              | 2      |
| 013    | 15.00832.00  | PANEL                      | 4      |
| 014    | 104.06000.00 | WASHER DIN7980 D6          | 8      |
| 015    | 603.06015.86 | SCREW DIN933 M6x15         | 2      |
| 016    | 901.08000.33 | GREASER DIN71412-A M8x1,25 | 2      |
| 017    | 16.01228.00  | SHAFT CIL/COA              | 2      |
| 018    | 45.99110.01  | GASKET SET                 | 1      |

# MACHINE OPERATION TOOLS

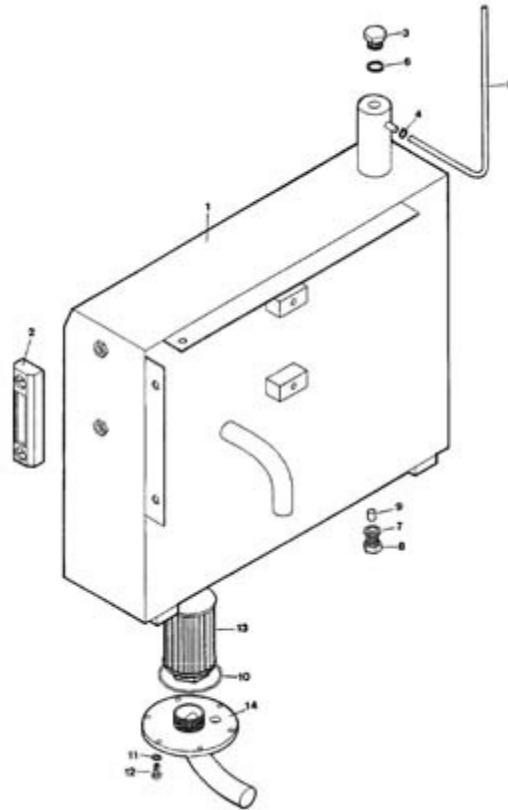
## LOAD PROTECTOR



| FIGURE | REFERENCE    | DENOMINATION        | AMOUNT |
|--------|--------------|---------------------|--------|
| 001    | 16.01501.01  | PROT. CARGA 1400MM  | 1      |
| 001    | 16.01501.02  | PROT. CARGA 1250MM  | 1      |
| 001    | 15.01501.05  | TRAMO I/E           | 1      |
| 001    | 16.01501.10  | PROT. CARGA         | 1      |
| 001    | 16.01501.11  | PROT. CARGA 1000MM  | 1      |
| 002    | 603.14045.86 | SCREW DIN933 M14x45 | 6      |
| 003    | 101.14000.66 | WASHER DIN125 D14   | 6      |

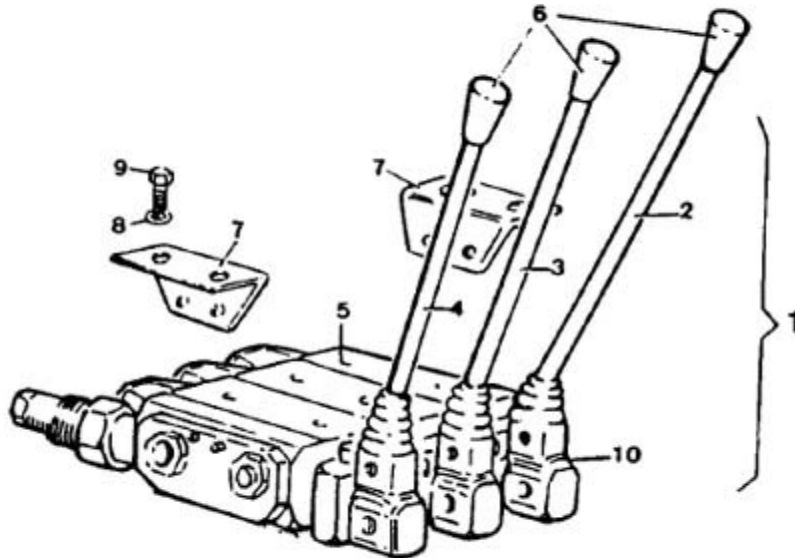
# HYDRAULIC INSTALLATION

## OIL TANK



| FIGURE | REFERENCE    | DENOMINATION                | AMOUNT |
|--------|--------------|-----------------------------|--------|
| 001    | 45.01460.04  | TANK                        | 1      |
| 002    | 43.20015.00  | LEVEL                       | 1      |
| 003    | 45.10803.00  | CAP                         | 1      |
| 004    | 912.12000.66 | CLAMP                       | 1      |
| 005    | 45.01426.01  | TUBO PLAS. TRANS. 10x12x750 | 1      |
| 006    | 08.00316.00  | METALLIC GASKET BUNA D1/2 G | 1      |
| 007    | 107.14000.10 | WASHER AL 14x20x1.5         | 1      |
| 008    | 00.02803.00  | SCREW DIN910*               | 1      |
| 009    | 01.00335.00  | MAGNET                      | 1      |
| 010    | 201.95003.50 | O-RING DIN3770              | 1      |
| 011    | 104.06000.00 | WASHER DIN7980 D6           | 6      |
| 012    | 603.06015.86 | SCREW DIN933 M6x15          | 6      |
| 013    | 08.00360.01  | OIL FILTER                  | 1      |
| 014    | 43.11460.01  | SOP. FILTRO ASP. D128x1-1/4 | 1      |

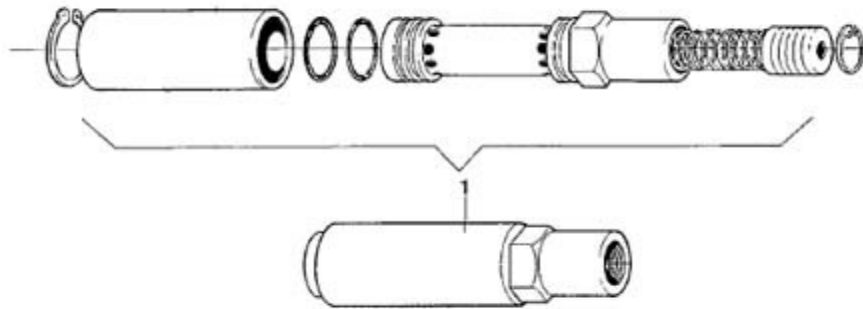
# HYDRAULIC INSTALLATION DISTRIBUTOR



| FIGURE | REFERENCE    | DENOMINATION            | AMOUNT |
|--------|--------------|-------------------------|--------|
| 001    | 45.14500.02  | Distributor             | 1      |
| 002    | 45.00331.11  | CONTROL LEVER           | 1      |
| 003    | 45.00331.12  | CONTROL LEVER           | 1      |
| 004    | 45.00331.13  | CONTROL LEVER           | 1      |
| 005    | 45.01450.04  | CONTROL VALVE 3E        | 1      |
| 006    | 60.01007.00  | KNOB                    | 3      |
| 007    | 45.14501.02  | PLATINA ANGULAR SOPORTE | 2      |
| 008    | 104.08000.00 | WASHER DIN7980 D8       | 4      |
| 009    | 618.08020.86 | SCREW DIN7991 M8x20     | 4      |
| 010    | 47.14332.01  | BUTT                    | 3      |

# HYDRAULIC INSTALLATION

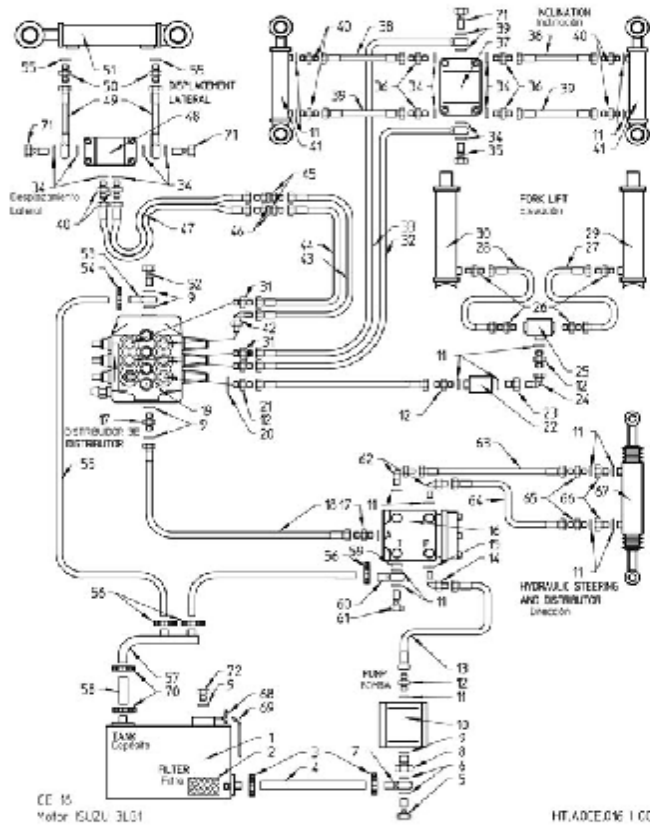
## RELEASE VALVE



| FIGURE | REFERENCE   | DENOMINATION | AMOUNT |
|--------|-------------|--------------|--------|
| 001    | 10.01392.00 | VALVE        | 1      |

# HYDRAULIC INSTALLATION

## HYDRAULIC INSTALLATION



| FIGURE | REFERENCE    | DENOMINATION                | AMOUNT |
|--------|--------------|-----------------------------|--------|
| 001    | 45.01460.04  | TANK                        | 1      |
| 002    | 43.11460.01  | SOP. FILTRO ASP. D128x1-1/4 | 1      |
| 003    | 912.32050.66 | CLAMP DIN3017               | 1      |
| 004    | 43.41423.00  | TUBO GOMA B/P 30X42X470     | 1      |
| 005    | 43.60232.00  | RACOR TOR. SIMPLE 26x68     | 1      |
| 006    | 45.01423.00  | GASKET                      | 1      |
| 007    | 51.01378.00  | RACOR O/TB 3/4G-D30         | 1      |
| 008    | 21.11012.00  | NIPPLE                      | 1      |
| 009    | 08.00316.00  | METALLIC GASKET BUNA D1/2 G | 1      |
| 010    | 15.01157.00  | HYDR. PUMP (ISUZU)          | 1      |
| 011    | 08.00317.00  | METALLIC GASKET BUNA D3/8   | 1      |
| 012    | 08.00313.00  | FITTING M/M 1/2 G-3/8 G     | 1      |
| 013    | 45.01445.00  | HOSE                        | 1      |
| 014    | 43.01454.00  | ELBOW C90M/M NIPPLE         | 1      |
| 016    | 45.01005.00  | STEERING VALVE              | 1      |
| 017    | 43.01425.00  | FITTING M/M 1/2G-1/2G       | 1      |



|     |             |                  |   |
|-----|-------------|------------------|---|
| 018 | 45.01443.01 | HOSE             | 1 |
| 019 | 45.01450.04 | CONTROL VALVE 3E | 1 |

## HYDRAULIC INSTALLATION

### HYDRAULIC INSTALLATION

| FIGURE | REFERENCE    | DENOMINATION                  | AMOUNT |
|--------|--------------|-------------------------------|--------|
| 020    | 08.00310.00  | HOSE                          | 1      |
| 021    | 45.01483.02  | TUBO R2T1/2 890 C90TL-C45TL1/ | 1      |
| 022    | 51.01392.00  | VALVE                         | 1      |
| 023    | 45.01472.00  | NIPPLE M/H                    | 1      |
| 024    | 15.01355.00  | ELBOW C90LM/H NIPPLE          | 1      |
| 025    | 45.20186.00  | NIPPLE H/H/H                  | 1      |
| 026    | 47.01435.00  | NIPPLE M/M                    | 1      |
| 027    | 45.20385.03  | TUBE COPPER                   | 1      |
| 028    | 45.20385.04  | TUBE COPPER                   | 1      |
| 029    | 45.30325.09  | CYLINDER S/E                  | 1      |
| 030    | 45.30324.09  | CYLINDER S/E                  | 1      |
| 031    | 45.01454.00  | NIPPLE M/M                    | 1      |
| 032    | 45.01489.00  | TUBE PAC7,5                   | 1      |
| 033    | 45.01490.00  | TUBE PAC7,5                   | 1      |
| 034    | 28.00341.00  | METALLIC GASKET BUNA D1/4     | 1      |
| 035    | 28.00340.00  | SIMPLE SCREW FITTING 1/4 Gx26 | 1      |
| 036    | 28.00337.00  | FITTING M/M 1/4 G-1/4 G       | 1      |
| 037    | 45.01498.00  | NIPPLE H/H/H/H                | 1      |
| 038    | 45.01491.02  | HOSE R1T1/4                   | 1      |
| 039    | 45.01491.01  | HOSE                          | 1      |
| 040    | 19.00720.00  | NIPPLE M/M                    | 1      |
| 041    | 45.01100.01  | CONJ. CILINDRO INCLINACION    | 1      |
| 042    | 45.01453.00  | ELBOW C90MO/M NIPPLE          | 1      |
| 043    | 45.01451.02  | TUBE COPPER3                  | 1      |
| 044    | 45.01452.02  | TUBE MET.                     | 1      |
| 045    | 43.01369.00  | NIPPLE M/M                    | 1      |
| 046    | 101.14000.66 | WASHER DIN125 D14             | 1      |
| 047    | 58.30366.05  | TUBE DR7                      | 1      |
| 048    | 19.00520.01  | NIPPLE                        | 1      |
| 049    | 28.00509.00  | TUBE COPPER11                 | 1      |
| 050    | 19.00544.00  | NIPPLE M/M                    | 1      |
| 051    | 28.00200.03  | CYLINDER D/E                  | 1      |



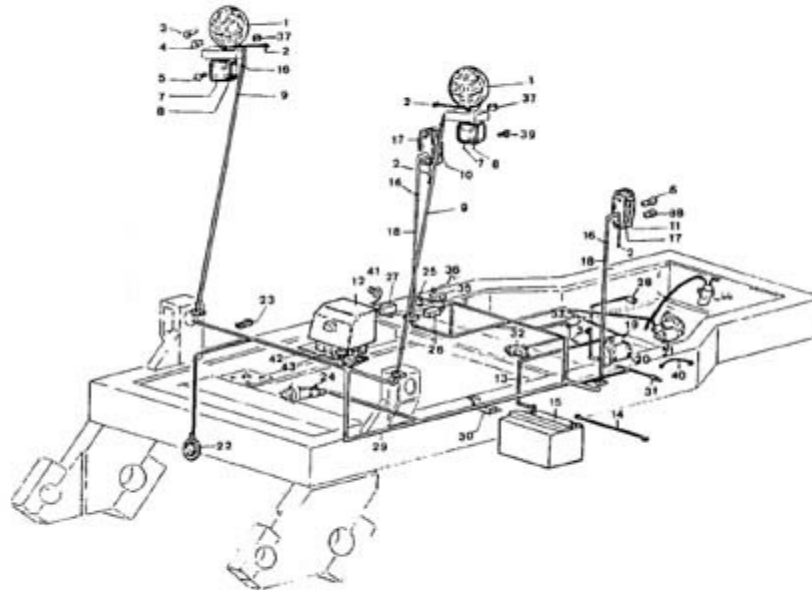
|     |              |                         |   |
|-----|--------------|-------------------------|---|
| 052 | 52.01459.00  | NIPPLE SCREW SIM.       | 1 |
| 053 | 16.01371.00  | NIPPLE O/TB             | 1 |
| 054 | 912.20032.00 | CLAMP                   | 1 |
| 055 | 45.01486.02  | TUBO GOMA B/P 15x25x600 | 1 |

**HYDRAULIC INSTALLATION**  
**HYDRAULIC INSTALLATION**

| <b>FIGURE</b> | <b>REFERENCE</b> | <b>DENOMINATION</b>           | <b>AMOUNT</b> |
|---------------|------------------|-------------------------------|---------------|
| 056           | 912.20032.00     | CLAMP                         | 1             |
| 057           | 45.01520.00      | HOSE                          | 1             |
| 058           | 46.11446.10      | TUBO GOMA B/P 25X35X100       | 1             |
| 059           | 14.01315.00      | BUSH                          | 1             |
| 060           | 08.00297.00      | NIPPLE O/TB                   | 1             |
| 061           | 10.01382.00      | NIPPLE SCREW SIM.             | 1             |
| 062           | 43.01453.00      | ELBOW C90M/M NIPPLE           | 1             |
| 063           | 45.01481.00      | HOSE                          | 1             |
| 064           | 45.01482.00      | HOSE R1T3/8                   | 1             |
| 065           | 08.00319.00      | NIPPLE M/M                    | 1             |
| 066           | 10.01352.00      | NIPPLE M/H                    | 1             |
| 067           | 45.00640.11      | CYLINDER D/E                  | 1             |
| 068           | 912.12000.66     | CLAMP                         | 1             |
| 069           | 45.01426.01      | TUBO PLAS. TRANS. 10x12x750   | 1             |
| 070           | 912.40060.66     | CLAMP D40-60                  | 1             |
| 071           | 28.00340.00      | SIMPLE SCREW FITTING 1/4 Gx26 | 1             |
| 072           | 45.10803.00      | CAP                           | 1             |

# ELECTRIC INSTALLATION

## ELECTRIC INSTALLATION



| FIGURE | REFERENCE   | DENOMINATION                | AMOUNT |
|--------|-------------|-----------------------------|--------|
| 001    | 43.01321.00 | BEACON                      | 2      |
| 002    | 43.01320.00 | CABLE MASA FARO             | 2      |
| 003    | 31.01322.00 | BULB                        | 2      |
| 004    | 43.01324.00 | BULB                        | 3      |
| 005    | 31.01329.00 | LAMP 12V 21W                | 2      |
| 006    | 31.01329.00 | LAMP 12V 21W                | 2      |
| 007    | 43.01323.01 | PILOT                       | 2      |
| 008    | 43.13230.01 | DIFUSOR PILOTO INTERMITENTE | 2      |
| 009    | 45.01504.05 | LENGTH ELEC. INSTAL.        | 2      |
| 010    | 31.13270.03 | PILOT                       | 2      |
| 011    | 54.01327.00 | PILOT                       | 2      |
| 012    | 51.50921.00 | TABLIER ELECTRICO COMP      | 1      |
| 013    | 54.01446.00 | CABLE ELEC. BATERIA POS.    | 1      |
| 014    | 15.01444.00 | ELECTRICAL CABLE            | 1      |
| 015    | 00.09035.01 | BATTERY                     | 1      |
| 016    | 16.01155.00 | GROMMET D11XD15XD19X4X8     | 4      |

|     |             |       |   |
|-----|-------------|-------|---|
| 017 | 31.01327.01 | PILOT | 1 |
| 017 | 31.01327.02 | PILOT | 1 |

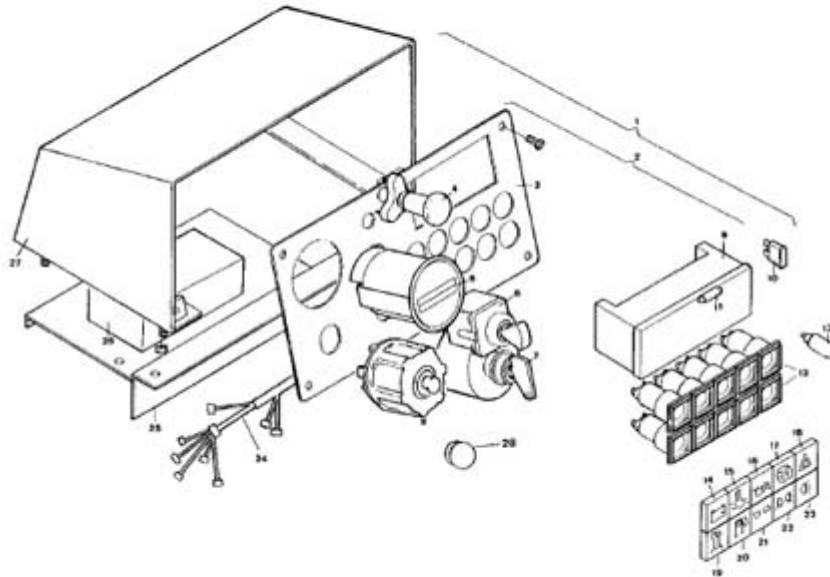
## ELECTRIC INSTALLATION

### ELECTRIC INSTALLATION

| FIGURE | REFERENCE    | DENOMINATION                   | AMOUNT |
|--------|--------------|--------------------------------|--------|
| 018    | 45.01505.02  | TRAMO I/E FARO TRAS.           | 2      |
| 019    | 01.00855.00  | ACC. FORK                      | 1      |
| 020    | 86.70000.02  | STARTER ENGINE                 | 1      |
| 021    | IZ.10001.00  | GENERATOR                      | 1      |
| 022    | 00.09034.00  | HORN                           | 1      |
| 023    | 830.02506.00 | CLAMP LOOP                     | 3      |
| 024    | 43.01521.00  | SWITCH                         | 1      |
| 025    | 45.01525.00  | SWITCH                         | 1      |
| 026    | 58.15340.00  | HORN                           | 2      |
| 027    | 43.10625.00  | BOX.                           | 1      |
| 028    | IZ.10009.00  | MONOCONTACTO ACEITE            | 1      |
| 029    | 45.01504.05  | LENGTH ELEC. INSTAL.           | 1      |
| 030    | 43.11437.00  | CLAMP                          | 1      |
| 031    | IZ.10008.00  | THERMOCONTACT                  | 1      |
| 032    | 86.70000.07  | ELECTRIC FUEL PUMP (CH 200)    | 1      |
| 033    | 43.20070.00  | RESISTANCE PRECH 3LB1,3LD1,4LE | 1      |
| 034    | 45.04545.00  | ELECTRICAL CABLE               | 1      |
| 035    | 45.00328.01  | SOP. ANG.                      | 1      |
| 036    | 708.14000.66 | NUT                            | 1      |
| 037    | 01.00804.01  | BUSH                           | 2      |
| 038    | 31.01331.00  | LAMP 12V 21W/5W                | 2      |
| 039    | 615.05030.66 | SCREW DIN84                    | 4      |
| 040    | 45.01517.00  | CABLE ELEC. D2,5x130x1         | 1      |
| 041    | 43.06261.00  | SENSOR                         | 1      |
| 042    | 43.10621.00  | BOX.                           | 1      |
| 043    | 43.10623.01  | BOX.                           | 1      |
| 044    | 86.80000.03  | SOLENOID                       | 1      |

# ELECTRIC INSTALLATION

## PANEL ELECTRICAL INSTALLATION



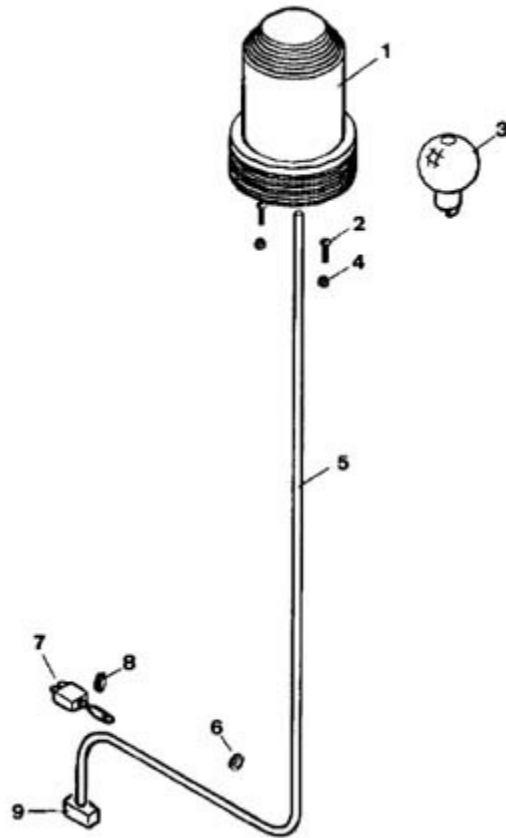
| FIGURE | REFERENCE   | DENOMINATION           | AMOUNT |
|--------|-------------|------------------------|--------|
| 001    | 51.50921.00 | TABLIER ELECTRICO COMP | 1      |
| 002    | 51.09210.00 | DASH, PANEL            | 1      |
| 003    | 43.50921.00 | FLANGE                 | 1      |
| 004    | 09.70034.00 | SWITCH                 | 1      |
| 005    | 31.01330.00 | WORK-OUR METER         | 1      |
| 006    | 43.50026.00 | CONMUTATOR             | 1      |
| 007    | 43.50022.00 | CONMUTATOR WITH KEY    | 1      |
| 008    | 43.50022.00 | CONMUTATOR WITH KEY    | 1      |
| 009    | 43.50011.00 | BOX.                   | 1      |
| 010    | 43.50029.00 | FUSIBLE 7.5A           | 5      |
| 010    | 43.50032.00 | FUSE 15A               | 6      |
| 010    | 43.50035.00 | DIODE                  | 2      |
| 012    | 43.50028.00 | PLUG                   | 2      |
| 013    | 43.50027.00 | BULB                   | 10     |
| 014    | 43.50016.00 | WARNING LIGHT          | 1      |
| 015    | 43.50015.00 | WARNING LIGHT          | 1      |

|     |             |               |   |
|-----|-------------|---------------|---|
| 016 | 43.50014.00 | WARNING LIGHT | 1 |
| 017 | 43.50013.00 | WARNING LIGHT | 1 |

**ELECTRIC INSTALLATION**  
**PANEL ELECTRICAL INSTALLATION**

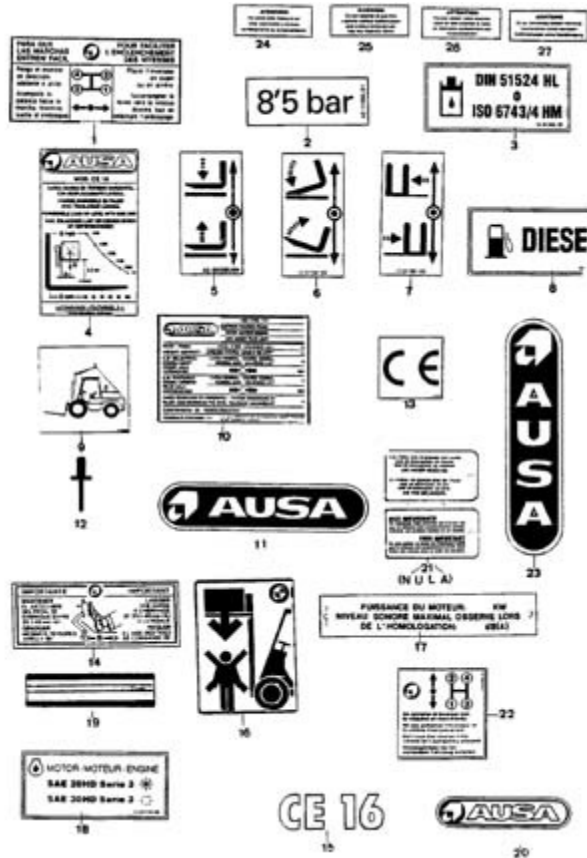
| <b>FIGURE</b> | <b>REFERENCE</b> | <b>DENOMINATION</b>    | <b>AMOUNT</b> |
|---------------|------------------|------------------------|---------------|
| 018           | 43.50012.00      | WARNING LIGHT          | 1             |
| 019           | 43.50021.00      | WARNING LIGHT          | 1             |
| 020           | 43.50020.00      | WARNING LIGHT          | 1             |
| 021           | 43.50019.00      | WARNING LIGHT          | 1             |
| 022           | 43.50018.00      | WARNING LIGHT          | 1             |
| 023           | 43.50017.00      | WARNING LIGHT          | 1             |
| 024           | 43.50506.00      | CABLEADO TABLIER COMP. | 1             |
| 025           | 43.50555.00      | SHEET SUPPORT          | 1             |
| 026           | 58.15340.00      | HORN                   | 1             |
| 027           | 43.50920.00      | BOX.                   | 1             |
| 028           | 02.32016.00      | CAP                    | 1             |

# ELECTRIC INSTALLATION ROTATING BEACON



| FIGURE | REFERENCE    | DENOMINATION            | AMOUNT |
|--------|--------------|-------------------------|--------|
| 001    | 01.00922.00  | BEACON                  | 1      |
| 002    | 601.06025.86 | SCREW DIN912            | 3      |
| 003    | 01.00923.00  | BULB                    | 1      |
| 004    | 711.06000.66 | NUT DIN982 M6           | 3      |
| 005    | 01.00927.01  | LENGTH ELEC. INSTAL.    | 1      |
| 006    | 16.01155.00  | GROMMET D11XD15XD19X4X8 | 2      |
| 007    | 43.50024.01  | SWITCH                  | 1      |
| 008    | 43.50025.00  | DUST EXCLUDER           | 1      |
| 009    | 828.00200.00 | TERMINAL                | 1      |

# FINISHES PLATES



| FIGURE | REFERENCE    | DENOMINATION              | AMOUNT |
|--------|--------------|---------------------------|--------|
| 001    | 45.01354.11  | PLATE INDI.               | 1      |
| 001    | 45.01354.12  | PLATE AD. INDI            | 2      |
| 002    | 43.11355.01  | PLATE AD. INDI            | 4      |
| 003    | 43.01352.10  | PLATE AD. INDI            | 1      |
| 004    | 45.01350.11  | PLATE CHARAC.             | 1      |
| 004    | 45.01350.30  | PLATE CHARAC.             | 1      |
| 004    | 45.01350.40  | PLATE CHARAC.             | 1      |
| 005    | 43.01351.01  | PLATE AD. INDI            | 1      |
| 006    | 43.01351.02  | PLATE AD. INDI            | 1      |
| 007    | 43.01351.03  | PLATE AD. INDI            | 1      |
| 008    | 43.01356.00  | PLATE AD. INDI            | 1      |
| 009    | 58.01353.01  | PLATE AD. INDI            | 1      |
| 010    | 01.00779.26  | PLATE - CONTACT WITH AUSA | 1      |
| 010    | 01.00779.26  | PLATE - CONTACT WITH AUSA | 1      |
| 011    | 09.09902.01  | PLATE AD. INDI            | 2      |
| 012    | 502.03000.60 | RIVET DIN1476             | 2      |





|     |             |                |   |
|-----|-------------|----------------|---|
| 013 | 45.19101.00 | PLATE AD. INDI | 1 |
| 014 | 45.00760.00 | PLATE AD. INDI | 1 |

**FINISHES  
PLATES**

| <b>FIGURE</b> | <b>REFERENCE</b> | <b>DENOMINATION</b> | <b>AMOUNT</b> |
|---------------|------------------|---------------------|---------------|
| 015           | 45.19000.00      | PLATE AD. INDI      | 3             |
| 016           | 45.01352.00      | PLATE AD. INDI      | 1             |
| 017           | 01.00767.00      | PLATE CHARAC.       | 1             |
| 018           | 43.01170.00      | PLATE AD. INDI      | 1             |
| 019           | 43.10960.00      | PLATE AD. INDI      | 1             |
| 019           | 43.10961.00      | PLATE AD. INDI      | 1             |
| 019           | 43.10962.00      | PLATE AD. INDI      | 1             |
| 019           | 43.10963.00      | PLATE AD. INDI      | 1             |
| 020           | 13.12136.00      | ADHESIVE 450x92     | 1             |
| 021           | 01.13570.00      | PLATE AD. INDI      | 1             |
| 022           | 45.01354.10      | PLATE AD. INDI      | 1             |
| 023           | 10.00788.00      | PLATE AD. INDI      | 2             |
| 024           | 02.00774.00      | PLATE AD. INDI      | 1             |
| 025           | 02.00777.00      | PLATE AD. INDI      | 1             |
| 026           | 02.00778.00      | PLATE AD. INDI      | 1             |
| 027           | 02.00779.02      | PLATE AD. INDI      | 1             |

## INDEX

---

### **02. ENGINE**

|                    |   |
|--------------------|---|
| MOTOR              | 2 |
| Engine and Muffler | 3 |
| CLUTCH             | 4 |
| engine supports    | 5 |
| radiator           | 6 |
| Gas-oil tank       | 7 |
| ACCELERATOR        | 8 |

### **TRANSMISSION**

|                     |    |
|---------------------|----|
| Clutch bell housing | 10 |
| Clutch pedal        | 12 |
| Gearbox (external)  | 13 |
| Gearbox (internal)  | 15 |
| Differential        | 18 |
| Shift gear levers   | 20 |
| Front axle          | 22 |
| Rear axle           | 24 |

### **04. CHASSIS**

|  |    |
|--|----|
| Chassis. Counterweights and Protectors | 27 |
|--|----|

### **BRAKE ACTIVATION**

|               |    |
|---------------|----|
| FOOT BRAKE    | 29 |
| Brake pump    | 32 |
| Parking Brake | 33 |

### **STEERING**

|          |    |
|----------|----|
| Steering | 35 |
|----------|----|

### **WHEEL**

|             |    |
|-------------|----|
| Roues avant | 36 |
|-------------|----|

### **BODY**

|                       |    |
|-----------------------|----|
| Driver protector roof | 37 |
|-----------------------|----|

|      |    |
|------|----|
| Seat | 39 |
|------|----|

**Machine operation tools**

|                               |    |
|-------------------------------|----|
| Port-fork plate               | 41 |
| Portforks accesories          | 42 |
| Lateral displacement          | 43 |
| Displacement cylinder         | 44 |
| Forks                         | 45 |
| Mast                          | 46 |
| Displacement panel accesories | 48 |
| Chain mounting                | 49 |
| Elevation cylinder            | 51 |
| Inclination cylinder          | 53 |
| Load protector                | 54 |

**Hydraulic installation**

|                        |    |
|------------------------|----|
| Oil tank               | 55 |
| Distributor            | 56 |
| Release valve          | 57 |
| Hydraulic installation | 58 |

**Electric Installation**

|                               |    |
|-------------------------------|----|
| Electric Installation         | 61 |
| Panel electrical installation | 63 |
| Rotating Beacon               | 65 |

**FINISHES**

|        |    |
|--------|----|
| Plates | 66 |
|--------|----|